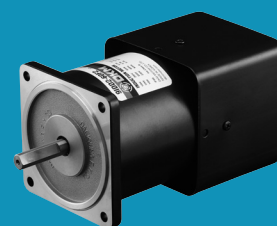


Speed Control Brake Motor



S.C. Brake Motor

Index

Speed Control Brake Motor 6W (□ 60mm)	B-287
Speed Control Brake Motor 6W (□ 70mm)	B-289
Speed Control Brake Motor 10W (□ 70mm)	B-291
Speed Control Brake Motor 15W (□ 70mm)	B-293
Speed Control Brake Motor 15W (□ 80mm)	B-295
Speed Control Brake Motor 25W (□ 80mm)	B-298
Speed Control Brake Motor 40W (□ 90mm)	B-301
Speed Control Brake Motor 60W (□ 90mm)	B-304
Speed Control Brake Motor 90W (□ 90mm)	B-308
Speed Control Brake Motor 120W (□ 90mm)	B-312
Speed Control Brake Motor 180W (□ 90mm)	B-316

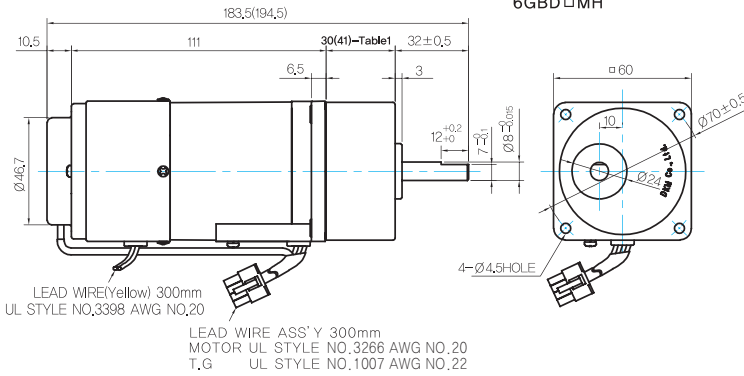
GEARED MOTOR

G TYPE GEARBOX

● MOTOR MODEL: 6SBDG□-6G (NO FAN)

● GEARBOX MODEL: 6GBD□MH

● GEARBOX OUTPUT SHAFT



MODEL	SPEC
D-CUT TYPE	

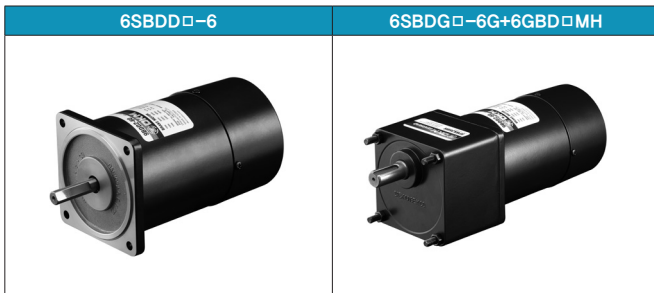
● 30(41)-Table1

SIZE(mm)	GEAR RATIO
30	6GBD3MH - 6GBD18MH
41	6GBD25MH - 6GBD360MH

● WEIGHT

PART	WEIGHT(Kg)
MOTOR	1,22

Motor Images



B AC Motors

S.C. Brake Motor 6W (□70mm)

6W Speed Control Brake Motor 6W(□70mm)

Motor 사양

Model 7SBDG*-6G: Gear Type Shaft 7SBDG*-6: D-Cut Type Shaft	Output W	Voltage V	Frequency Hz	Poles	Duty	Speed Range r/min	Starting Torque		Permissible Torque				Capacitor μF / VAC
							kgfcm	N.m	1200r/min		90r/min		
Lead Wire Type									kgfcm	N.m	kgfcm	N.m	
7SBDG-6G	6	1φ 110	60	4	30min.	90-1700	0.37	0.037	0.54	0.054	0.36	0.036	3.0 / 250
7SBDG2-6G	6	1φ 220	60	4	30min.	90-1700	0.41	0.041	0.56	0.056	0.39	0.039	1.0 / 450
7SBDGE-6G	6	1φ 220	50	4	30min.	90-1400	0.32	0.032	0.47	0.047	0.31	0.031	1.0 / 450
		1φ 240											

- 1) 모터 모델명 * 자리에는 전압코드가 들어갑니다.
- 2) Impedance Protected Type입니다.
- 3) Gear Type Shaft는 감속기 부착용이며 D-Cut Type Shaft는 모터 단독 사용시의 출력축 입니다.

감속기 부착 시 최대허용토크

Motor Model	Gearbox Model	회전 속도 r/min	전압 V	주파수 Hz	감속비	3	3.6	5	6	7.5	9	10	12.5	15	18	20	25
7SBDG*-6G	7GBK□BMH	1200	110	60	kgfcm	1.3	1.6	2.2	2.6	3.3	3.9	4.4	5.5	6.6	7.9	7.9	9.9
					N.m	0.13	0.15	0.21	0.26	0.32	0.39	0.43	0.54	0.64	0.77	0.77	0.97
					kgfcm	1.4	1.6	2.3	2.7	3.4	4.1	4.5	5.7	6.8	8.2	8.2	10.2
		N.m	0.13	0.16	0.22	0.27	0.33	0.40	0.44	0.56	0.67	0.80	0.80	1.00			
		90	220/240	50	kgfcm	1.1	1.4	1.9	2.3	2.9	3.4	3.8	4.8	5.7	6.9	6.9	8.6
					N.m	0.11	0.13	0.19	0.22	0.28	0.34	0.37	0.47	0.56	0.67	0.67	0.84
kgfcm	0.9				1.0	1.5	1.7	2.2	2.6	2.9	3.6	4.4	5.2	5.3	6.6		
N.m	0.09	0.10	0.14	0.17	0.21	0.26	0.29	0.36	0.43	0.51	0.52	0.64					
220/240	60	60	kgfcm	0.9	1.1	1.6	1.9	2.4	2.8	3.2	3.9	4.7	5.7	5.7	7.1		
			N.m	0.09	0.11	0.15	0.19	0.23	0.28	0.31	0.39	0.46	0.56	0.56	0.70		
			kgfcm	0.8	0.9	1.3	1.5	1.9	2.3	2.5	3.1	3.8	4.5	4.5	5.7		
N.m	0.07	0.09	0.12	0.15	0.18	0.22	0.25	0.31	0.37	0.44	0.44	0.55					

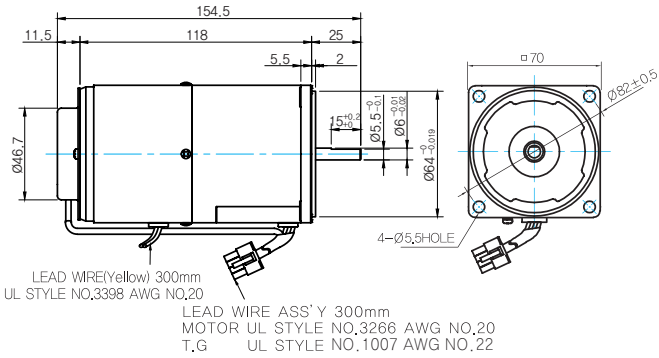
Motor Model	Gearbox Model	회전 속도 r/min	전압 V	주파수 Hz	감속비	30	36	40	50	60	75	90	100	120	150	180	200
7SBDG*-6G	7GBK□BMH	1200	110	60	kgfcm	11.8	14.2	15.8	17.8	21.4	26.7	32.1	35.6	42.8	50.0	50.0	50.0
					N.m	1.16	1.39	1.55	1.75	2.10	2.62	3.14	3.49	4.19	4.90	4.90	4.90
					kgfcm	12.3	14.7	16.4	18.5	22.2	27.7	33.3	37.0	44.4	50.0	50.0	50.0
					N.m	1.20	1.44	1.60	1.81	2.17	2.72	3.26	3.62	4.35	4.90	4.90	4.90
					kgfcm	10.3	12.4	13.7	15.5	18.6	23.3	27.9	31.0	37.2	46.5	50.0	50.0
					N.m	1.01	1.21	1.34	1.52	1.82	2.28	2.74	3.04	3.65	4.56	4.90	4.90
		90	220/240	50	kgfcm	7.9	9.5	10.5	11.9	14.3	17.8	21.4	23.8	28.5	35.6	42.8	47.5
					N.m	0.77	0.93	1.03	1.16	1.40	1.75	2.10	2.33	2.79	3.49	4.19	4.66
					kgfcm	8.5	10.2	11.4	12.9	15.4	19.3	23.2	25.7	30.9	38.6	46.3	51.5
					N.m	0.84	1.00	1.12	1.26	1.51	1.89	2.27	2.52	3.03	3.78	4.54	5.05
					kgfcm	6.8	8.1	9.1	10.2	12.3	15.3	18.4	20.5	24.6	30.7	36.8	40.9
					N.m	0.67	0.80	0.89	1.00	1.20	1.50	1.80	2.01	2.41	3.01	3.61	4.01

- 1) 모터 모델명 □ 안에는 전압코드가 들어갑니다.
- 2) 감속기 모델명 □ 안에는 감속비가 들어갑니다.
- 3) 위의 표에서 색칠된 범위의 감속비를 선택했을 때 감속기의 출력축은 모터의 출력축과 같은 방향으로 회전합니다. 흰색 바탕 범위의 감속비에서는 감속기 출력축은 모터 출력축의 회전방향과 반대방향으로 회전합니다.
- 4) 회전속도(r/min)는 모터의 동기회전속도(50Hz:1500r/min, 60Hz:1800r/min)를 감속비로 나누어 계산합니다. 실제 회전속도는 부하의 크기에 따라 표시보다 2~20% 정도 느립니다.

Dimensions

MOTOR ONLY

- MOTOR MODEL: 7SBDD□-6 (NO FAN)



- MOTOR OUTPUT SHAFT

MODEL	SPEC
D-CUT TYPE	

GEARED MOTOR

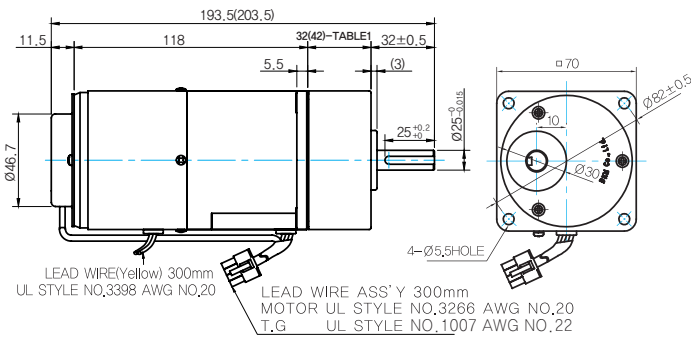
G TYPE GEARBOX

- MOTOR MODEL: 7SBDG□-6G (NO FAN)

- GEARBOX MODEL: 7GBK□BMH

- GEARBOX OUTPUT SHAFT

- KEY SPEC



- KEY SPEC

MODEL	SPEC
KEY TYPE	

GEARBOX	

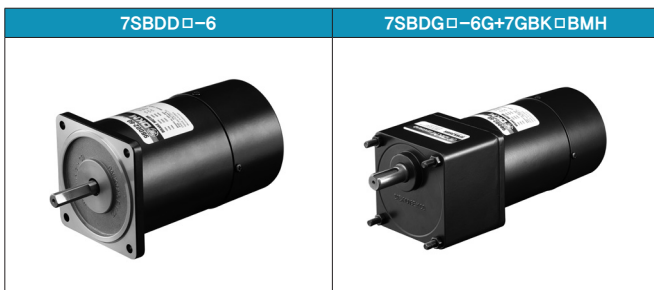
- WEIGHT

- 32(42)-Table1

SIZE(mm)	GEAR RATIO
32	7GBK3BMH - 7GBK18BMH
42	7GBK20BMH - 7GBK200BMH

PART	WEIGHT(Kg)	
MOTOR	1.30	
GEAR BOX	7GBK3BMH - 7GBK18BMH	0.38
	7GBK20BMH - 7GBK40BMH	0.48
	7GBK50BMH - 7GBK200BMH	0.53

Motor Images



B AC Motors

S.C. Brake Motor 10W (□70mm)

10W Speed Control Brake Motor 10W(□70mm)

Motor 사양

Model 7SBDG□-10G: Gear Type Shaft 7SBDD□-10: D-Cut Type Shaft	Output W	Voltage V	Frequency Hz	Poles	Duty	Speed Range r/min	Starting Torque		Permissible Torque				Capacitor μF / VAC
							kgfcm	N.m	1200r/min		90r/min		
Lead Wire Type									kgfcm	N.m	kgfcm	N.m	
7SBDG1(A)-10G	10	1∅110	60	4	30min.	90-1700	0.60	0.060	0.75	0.075	0.42	0.042	3.5 / 250
7SBDG2(D)-10G	10	1∅220	60	4	30min.	90-1700	0.60	0.060	0.75	0.075	0.42	0.042	1.2 / 450
7SBDGE-10G	10	1∅220	50	4	30min.	90-1400	0.58	0.058	0.74	0.074	0.41	0.041	1.2 / 450
		0.62					0.062	0.76	0.076	0.42	0.042		

- 1) 모터 모델명 * 자리에는 전압코드가, □ 안에는 부착되는 감속기의 모델 타입명이 들어갑니다.
- 2) 전압코드 A, D, E는 TP(Thermal Protector) 부착 사양입니다.
- 3) Gear Type Shaft는 감속기 부착용이며 D-Cut Type Shaft는 모터 단독 사용시의 출력축입니다.

감속기 부착 시 최대허용토크

Motor Model	Gear box Model	회전 속도 r/min	전압 V	주파수 Hz	감속비	3	3.6	5	6	7.5	9	10	12.5	15	18	20	25
7SBDG*-10G	7GBK□BMH	1200	110	60	kgfcm N.m	1.8 0.18	2.2 0.21	3.0 0.30	3.6 0.36	4.6 0.45	5.5 0.54	6.1 0.60	7.6 0.74	9.1 0.89	10.9 1.07	11.0 1.07	13.7 1.34
			220	60	kgfcm N.m	1.8 0.18	2.2 0.21	3.0 0.30	3.6 0.36	4.6 0.45	5.5 0.54	6.1 0.60	7.6 0.74	9.1 0.89	10.9 1.07	11.0 1.07	13.7 1.34
			220/ 240	50	kgfcm N.m	1.8 0.18	2.2 0.21	3.0 0.29	3.6 0.35	4.5 0.44	5.4 0.53	6.0 0.59	7.5 0.73	9.0 0.88	10.8 1.06	10.8 1.06	13.5 1.32
		90	110	60	kgfcm N.m	1.0 0.10	1.2 0.12	1.7 0.17	2.0 0.20	2.6 0.25	3.1 0.30	3.4 0.33	4.3 0.42	5.1 0.50	6.1 0.60	6.1 0.60	7.7 0.75
			220	60	kgfcm N.m	1.0 0.10	1.2 0.12	1.7 0.17	2.0 0.20	2.6 0.25	3.1 0.30	3.4 0.33	4.3 0.42	5.1 0.50	6.1 0.60	6.1 0.60	7.7 0.75
			220/ 240	50	kgfcm N.m	1.0 0.10	1.2 0.12	1.7 0.16	2.0 0.20	2.5 0.24	3.0 0.29	3.3 0.33	4.2 0.41	5.0 0.49	6.0 0.59	6.0 0.59	7.5 0.73

Motor Model	Gear box Model	회전 속도 r/min	전압 V	주파수 Hz	감속비	30	36	40	50	60	75	90	100	120	150	180	200	
7SBDG*-10G	7GBK□BMH	1200	110	60	kgfcm N.m	16.4 1.61	19.7 1.93	21.9 2.15	24.8 2.43	29.7 2.91	37.1 3.64	44.6 4.37	49.5 4.85	50.0 4.90	50.0 4.90	50.0 4.90	50.0 4.90	
			220	60	kgfcm N.m	16.4 1.61	19.7 1.93	21.9 2.15	24.8 2.43	29.7 2.91	37.1 3.64	44.6 4.37	49.5 4.85	50.0 4.90	50.0 4.90	50.0 4.90	50.0 4.90	50.0 4.90
			220/ 240	50	kgfcm N.m	16.2 1.59	19.4 1.91	21.6 2.12	24.4 2.39	29.3 2.87	36.6 3.59	44.0 4.31	48.8 4.79	50.0 4.90	50.0 4.90	50.0 4.90	50.0 4.90	50.0 4.90
		90	110	60	kgfcm N.m	9.2 0.90	11.0 1.08	12.3 1.20	13.9 1.36	16.6 1.63	20.8 2.04	24.9 2.44	27.7 2.72	33.3 3.26	41.6 4.07	49.9 4.89	50.0 4.90	
			220	60	kgfcm N.m	9.2 0.90	11.0 1.08	12.3 1.20	13.9 1.36	16.6 1.63	20.8 2.04	24.9 2.44	27.7 2.72	33.3 3.26	41.6 4.07	49.9 4.89	50.0 4.90	
			220/ 240	50	kgfcm N.m	9.0 0.88	10.8 1.06	12.0 1.17	13.5 1.33	16.2 1.59	20.3 1.99	24.4 2.39	27.1 2.65	32.5 3.18	40.6 3.98	48.7 4.77	50.0 4.90	

- 1) 모터 모델명 □ 안에는 전압코드가 들어갑니다.
- 2) 감속기 모델명 □ 안에는 감속비가 들어갑니다.
- 3) 위의 표에서 색칠된 범위의 감속비를 선택했을 때 감속기의 출력축은 모터의 출력축과 같은 방향으로 회전합니다. 흰색 바탕 범위의 감속비에서는 감속기 출력축은 모터 출력축의 회전방향과 반대방향으로 회전합니다.
- 4) 회전속도(r/min)는 모터의 동기회전속도(50Hz:1500r/min, 60Hz:1800r/min)를 감속비로 나누어 계산합니다. 실제 회전속도는 부하의 크기에 따라 표시보다 2~20% 정도 느립니다.

B AC Motors

S.C. Brake Motor 15W (□70mm)

15W Speed Control Brake Motor 15W(□70mm)

Motor 사양

Model 7SBDG ⁺ -15G: Gear Type Shaft 7SBD ⁺ -15: D-Cut Type Shaft	Output W	Voltage V	Frequency Hz	Poles	Duty	Speed Range r/min	Starting Torque kgfcm N.m		Permissible Torque				Capacitor μF / VAC
									1200r/min		90r/min		
Lead Wire Type									kgfcm	N.m	kgfcm	N.m	
7SBDG1(A)-15G	15	1φ110	60	4	30min.	90-1700	1.00	0.100	1.35	0.135	0.55	0.055	6.0 / 250
7SBDG2(D)-15G	15	1φ220	60	4	30min.	90-1700	1.00	0.100	1.35	0.135	0.55	0.055	1.5 / 450
7SBDGE-15G	15	1φ220	50	4	30min.	90-1400	0.80	0.080	1.00	0.100	0.53	0.053	1.5 / 450
		1.00					0.100	1.20	0.120	0.57	0.057		

- 1) 모터 모델명 * 자리에는 전압코드가 들어갑니다.
- 2) 전압코드 A, D, E는 TP(Thermal Protector) 부착 사양입니다.
- 3) Gear Type Shaft는 감속기 부착용이며 D-Cut Type Shaft는 모터 단독 사용시의 출력축입니다.

감속기 부착 시 최대허용토크

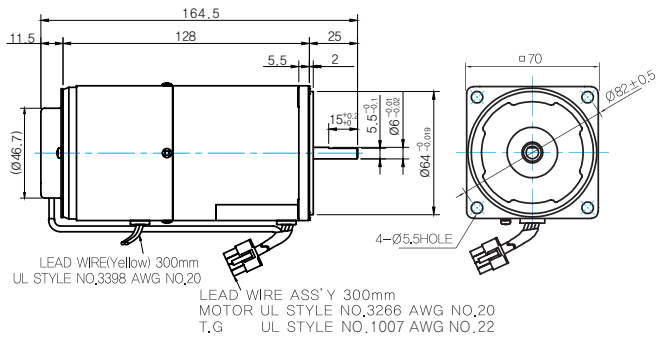
Motor Model	Gear box Model	회전 속도 r/min	전압 V	주파수 Hz	감속비	3	3.6	5	6	7.5	9	10	12.5	15	18	20	25	30	36	40	50	60	75	90	100	120	150	180	200			
7SBDG ⁺ -15G	7GBK □BMH	1200	110	60	kgfcm	3.3	3.9	5.5	6.6	8.2	9.8	10.9	13.7	16.4	19.7	19.7	24.6	29.6	35.5	39.4	44.6	53.5	66.8	50.0	50.0	50.0	50.0	50.0	50.0	50.0		
					N.m	0.32	0.39	0.54	0.64	0.80	0.96	1.07	1.34	1.61	1.93	1.93	2.41	2.90	3.48	3.86	4.37	5.24	6.55	8.15	6.55	4.90	4.90	4.90	4.90	4.90	4.90	4.90
					N.m	0.32	0.39	0.54	0.64	0.80	0.96	1.07	1.34	1.61	1.93	1.93	2.41	2.90	3.48	3.86	4.37	5.24	6.55	8.15	6.55	4.90	4.90	4.90	4.90	4.90	4.90	4.90
		kgfcm	2.4	2.9	4.1	4.9	6.1	7.3	8.1	10.1	12.2	14.6	14.6	18.3	21.9	26.3	29.2	33.0	39.6	49.5	50.0	50.0	50.0	50.0	50.0	50.0	50.0	50.0	50.0	50.0	50.0	
		N.m	0.24	0.29	0.40	0.48	0.60	0.71	0.79	0.99	1.19	1.43	1.43	1.79	2.15	2.58	2.86	3.23	3.88	4.85	4.90	4.90	4.90	4.90	4.90	4.90	4.90	4.90	4.90	4.90	4.90	
		N.m	0.24	0.29	0.40	0.48	0.60	0.71	0.79	0.99	1.19	1.43	1.43	1.79	2.15	2.58	2.86	3.23	3.88	4.85	4.90	4.90	4.90	4.90	4.90	4.90	4.90	4.90	4.90	4.90	4.90	
	90	60	kgfcm	1.3	1.6	2.2	2.7	3.3	4.0	4.5	5.6	6.7	8.0	8.0	10.0	12.0	14.5	16.1	18.2	21.8	27.2	32.7	36.3	43.6	50.0	50.0	50.0	50.0	50.0	50.0	50.0	
			N.m	0.13	0.16	0.22	0.26	0.33	0.39	0.44	0.55	0.65	0.79	0.79	0.98	1.18	1.42	1.57	1.78	2.13	2.67	3.20	3.56	4.27	4.90	4.90	4.90	4.90	4.90	4.90	4.90	
			N.m	0.13	0.16	0.22	0.26	0.33	0.39	0.44	0.55	0.65	0.79	0.79	0.98	1.18	1.42	1.57	1.78	2.13	2.67	3.20	3.56	4.27	4.90	4.90	4.90	4.90	4.90	4.90	4.90	
	220/240	50	kgfcm	1.3	1.5	2.1	2.6	3.2	3.9	4.3	5.4	6.4	7.7	7.7	9.7	11.6	13.9	15.5	17.5	21.0	26.2	31.5	35.0	42.0	50.0	50.0	50.0	50.0	50.0	50.0	50.0	
			N.m	0.13	0.15	0.21	0.25	0.32	0.38	0.42	0.53	0.63	0.76	0.76	0.95	1.14	1.36	1.52	1.71	2.06	2.57	3.09	3.43	4.11	4.90	4.90	4.90	4.90	4.90	4.90	4.90	
			N.m	0.13	0.15	0.21	0.25	0.32	0.38	0.42	0.53	0.63	0.76	0.76	0.95	1.14	1.36	1.52	1.71	2.06	2.57	3.09	3.43	4.11	4.90	4.90	4.90	4.90	4.90	4.90	4.90	

- 1) 모터 모델명 □ 안에는 전압코드가 들어갑니다.
- 2) 감속기 모델명 □ 안에는 감속비가 들어갑니다.
- 3) 위의 표에서 색칠된 범위의 감속비를 선택했을 때 감속기의 출력축은 모터의 출력축과 같은 방향으로 회전합니다.
흰색 바탕 범위의 감속비에서는 감속기 출력축은 모터 출력축의 회전방향과 반대방향으로 회전합니다.
- 4) 회전속도(r/min)는 모터의 동기회전속도(50Hz:1500r/min, 60Hz:1800r/min)를 감속비로 나누어 계산합니다. 실제 회전속도는 부하의 크기에 따라 표시보다 2~20% 정도 느립니다.

Dimensions

MOTOR ONLY

- MOTOR MODEL: 7SBDD□-15 (NO FAN)



- MOTOR OUTPUT SHAFT

MODEL	SPEC
D-CUT TYPE	

GEARED MOTOR

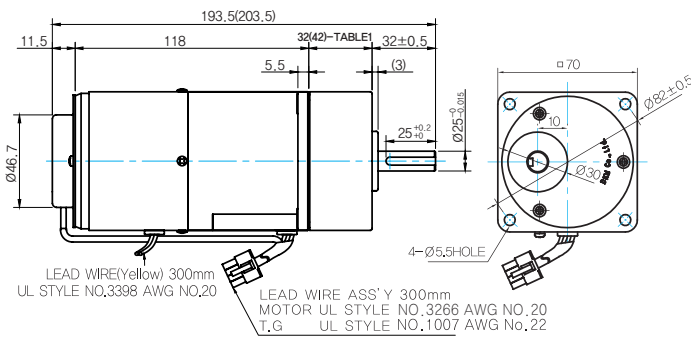
G TYPE GEARBOX

- MOTOR MODEL: 7SBDG□-15G (NO FAN)

- GEARBOX MODEL: 7GBK□BMH

- GEARBOX OUTPUT SHAFT

- KEY SPEC



MODEL	SPEC
KEY TYPE	

GEARBOX

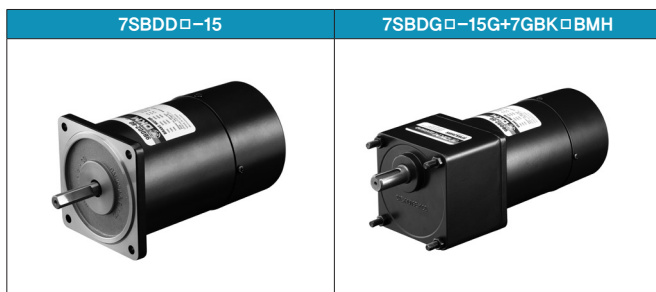
- 32(42)-Table1

SIZE(mm)	GEAR RATIO
32	7GBK3BMH - 7GBK18BMH
42	7GBK20BMH - 7GBK200BMH

- WEIGHT

	PART	WEIGHT(Kg)
	MOTOR	1.30
GEAR BOX	7GBK3BMH - 7GBK18BMH	0.38
	7GBK20BMH - 7GBK40BMH	0.48
	7GBK50BMH - 7GBK200BMH	0.53

Motor Images



B AC Motors

S.C. Brake Motor 15W (□80mm)

15W

Speed Control
Brake Motor
15W(□80mm)

Motor 사양

Model 8SBDG*-15□: Gear Type Shaft 8SBD0*-15: D-Cut Type Shaft	Output W	Voltage V	Frequency Hz	Poles	Duty	Speed Range r/min	Starting Torque		Permissible Torque				Capacitor μF / VAC
							kgfcm	N.m	1200r/min		90r/min		
Lead Wire Type									kgfcm	N.m	kgfcm	N.m	
8SBDG1(A)-15□	15	1φ110	60	4	30min.	90-1700	0.85	0.085	1.40	0.140	0.50	0.050	6.0 / 250
8SBDG2(D)-15□	15	1φ220	60	4	30min.	90-1700	0.85	0.085	1.40	0.140	0.50	0.050	1.5 / 450
8SBDGE-15□	15	1φ220	50	4	30min.	90-1400	0.75	0.075	1.30	0.130	0.48	0.048	1.5 / 450
		0.85					0.085	1.40	0.140	0.52	0.052		

- 1) 모터 모델명 * 자리에는 전압코드가, □ 안에는 부착되는 감속기의 모델 타입명이 들어갑니다.
- 2) 전압코드 A, D, E는 TP(Thermal Protector) 부착 사양입니다.
- 3) Gear Type Shaft는 감속기 부착용이며 D-Cut Type Shaft는 모터 단독 사용시의 출력축 입니다.

감속기 부착 시 최대허용토크

Motor Model	Gear box Model	회전 속도 r/min	전압 V	주파수 Hz	감속비	3	3.6	5	6	7.5	9	10	12.5	15	18	20	25	30	36	40	50	60	75	90	100	120	150	180	200	250	300	360				
8SBDG*-15G	8GBK □BMH	1200	110	60	kgfcm	3.4	4.1	5.7	6.8	8.5	10.2	11.3	14.2	17.0	20.4	25.6	30.7	36.8	40.9	46.2	55.4	69.3	80.0	80.0	80.0	80.0	80.0	80.0	80.0	80.0	80.0	80.0	80.0			
					N.m	0.33	0.40	0.56	0.67	0.83	1.00	1.11	1.39	1.67	2.00	2.00	2.50	3.00	3.61	4.01	4.53	5.43	6.79	7.84	7.84	7.84	7.84	7.84	7.84	7.84	7.84	7.84	7.84	7.84	7.84	
					kgfcm	3.4	4.1	5.7	6.8	8.5	10.2	11.3	14.2	17.0	20.4	20.4	25.6	30.7	36.8	40.9	46.2	55.4	69.3	80.0	80.0	80.0	80.0	80.0	80.0	80.0	80.0	80.0	80.0	80.0	80.0	80.0
		N.m			0.33	0.40	0.56	0.67	0.83	1.00	1.11	1.39	1.67	2.00	2.00	2.50	3.00	3.61	4.01	4.53	5.43	6.79	7.84	7.84	7.84	7.84	7.84	7.84	7.84	7.84	7.84	7.84	7.84	7.84	7.84	
		kgfcm			3.4	4.1	5.7	6.8	8.5	10.2	11.3	14.2	17.0	20.4	20.4	25.6	30.7	36.8	40.9	46.2	55.4	69.3	80.0	80.0	80.0	80.0	80.0	80.0	80.0	80.0	80.0	80.0	80.0	80.0	80.0	80.0
		N.m			0.33	0.40	0.56	0.67	0.83	1.00	1.11	1.39	1.67	2.00	2.00	2.50	3.00	3.61	4.01	4.53	5.43	6.79	7.84	7.84	7.84	7.84	7.84	7.84	7.84	7.84	7.84	7.84	7.84	7.84	7.84	7.84
	90	110	60	kgfcm	1.2	1.5	2.0	2.4	3.0	3.6	4.1	5.1	6.1	7.3	7.3	9.1	11.0	13.1	14.6	16.5	19.8	24.8	29.7	33.0	39.6	49.5	59.4	66.0	80.0	80.0	80.0	80.0	80.0	80.0		
				N.m	0.12	0.14	0.20	0.24	0.30	0.36	0.40	0.50	0.60	0.71	0.72	0.89	1.07	1.29	1.43	1.62	1.94	2.43	2.91	3.23	3.88	4.85	5.82	6.47	7.84	7.84	7.84	7.84	7.84	7.84		
				kgfcm	1.2	1.5	2.0	2.4	3.0	3.6	4.1	5.1	6.1	7.3	7.3	9.1	11.0	13.1	14.6	16.5	19.8	24.8	29.7	33.0	39.6	49.5	59.4	66.0	80.0	80.0	80.0	80.0	80.0	80.0	80.0	
		N.m		0.12	0.14	0.20	0.24	0.30	0.36	0.40	0.50	0.60	0.71	0.72	0.89	1.07	1.29	1.43	1.62	1.94	2.43	2.91	3.23	3.88	4.85	5.82	6.47	7.84	7.84	7.84	7.84	7.84	7.84	7.84		
		kgfcm		1.3	1.5	2.1	2.5	3.2	3.8	4.2	5.3	6.3	7.6	7.6	9.5	11.4	13.7	15.2	17.2	20.6	25.7	30.9	34.3	41.2	51.5	61.8	68.6	80.0	80.0	80.0	80.0	80.0	80.0	80.0		
		N.m		0.12	0.15	0.21	0.25	0.31	0.37	0.41	0.52	0.62	0.74	0.74	0.93	1.12	1.34	1.49	1.68	2.02	2.52	3.03	3.36	4.04	5.05	6.05	6.73	7.84	7.84	7.84	7.84	7.84	7.84			

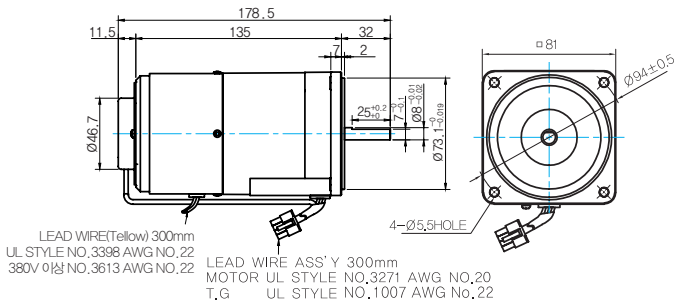
Motor Model	Gearbox Model	회전속도 r/min	전압 V	주파수 Hz	감속비	10	12	15	18	25	30	36	50	60
8SBDG*-15W	8WD □BL/□BR/□BRL	1200	110	60	kgfcm	11.5	13.4	16.2	18.6	24.5	27.7	32.3	42.0	46.2
					N.m	1.13	1.32	1.58	1.83	2.40	2.72	3.16	4.12	4.53
					kgfcm	11.6	13.9	17.4	20.9	29.1	34.9	41.8	58.1	69.7
		N.m			1.14	1.37	1.71	2.05	2.85	3.42	4.10	5.69	6.83	
		kgfcm			11.5	13.4	16.2	18.6	24.5	27.7	32.3	42.0	46.2	
		N.m			1.13	1.32	1.58	1.83	2.40	2.72	3.16	4.12	4.53	
	90	110	60	kgfcm	4.1	4.8	5.8	6.7	8.8	9.9	11.5	15.0	16.5	
				N.m	0.40	0.47	0.57	0.65	0.86	0.97	1.13	1.47	1.62	
				kgfcm	4.1	4.8	5.8	6.7	8.8	9.9	11.5	15.0	16.5	
		N.m		0.40	0.47	0.57	0.65	0.86	0.97	1.13	1.47	1.62		
		kgfcm		4.3	5.0	6.0	6.9	9.1	10.3	12.0	15.6	17.2		
		N.m		0.42	0.49	0.59	0.68	0.89	1.01	1.17	1.53	1.68		

- 1) 모터 모델명 * 자리에는 전압코드가 들어갑니다.
- 2) 감속기 모델명 □ 안에는 감속비가 들어갑니다.
- 3) 위의 표에서 색칠된 범위의 감속비를 선택했을 때 감속기의 출력축은 모터의 출력축과 같은 방향으로 회전합니다.
흰색 바탕 범위의 감속비에서는 감속기 출력축은 모터 출력축의 회전방향과 반대방향으로 회전합니다.
- 4) 회전속도(r/min)는 모터의 동기회전속도(50Hz:1500r/min, 60Hz:1800r/min)를 감속비로 나누어 계산합니다. 실제 회전속도는 부하의 크기에 따라 표시보다 2~20% 정도 느립니다.

Dimensions

MOTOR ONLY

- MOTOR MODEL: 8SBDD□-15 (NO FAN)

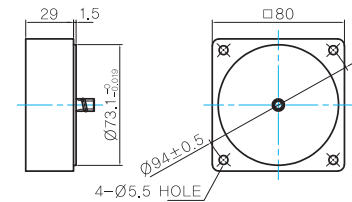


- MOTOR OUTPUT SHAFT

MODEL	SPEC
D-CUT TYPE	

중간감속기

- MODEL: 8XD10□□



GEARED MOTOR

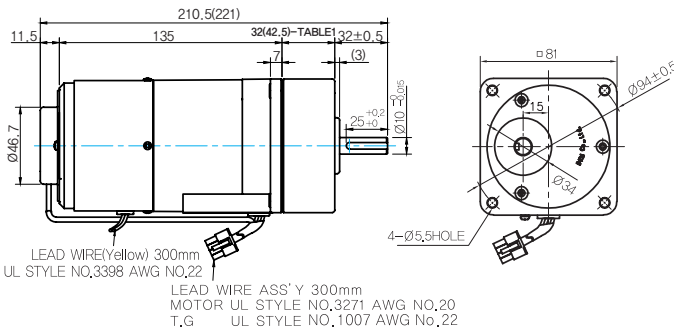
G TYPE GEARBOX

- MOTOR MODEL: 8SBDD□-15G (NO FAN)

- GEARBOX MODEL: 8GBK□BMH

- GEARBOX OUTPUT SHAFT

- KEY SPEC



MODEL	SPEC
KEY TYPE	

GEARBOX	

- 32(42.5)-Table1

SIZE(mm)	GEAR RATIO
32	8GBK3BMH - 8GBK18BMH
42.5	8GBK20BMH - 8GBK360BMH

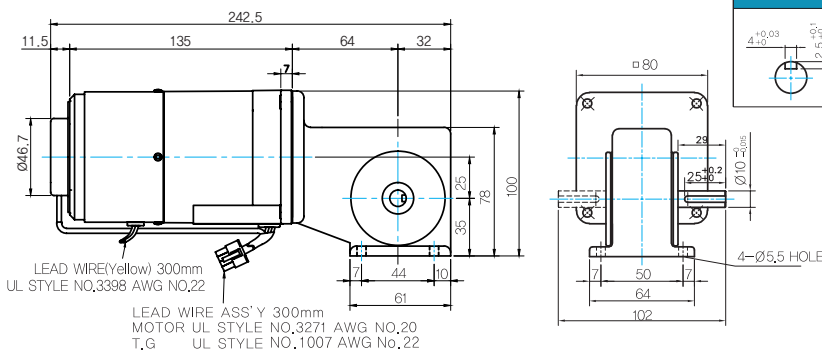
W TYPE GEARBOX

- MOTOR MODEL: 8SBDG□-15W (NO FAN)

- GEARBOX MODEL: 8WD□BL/BR/BRL

- KEY SPEC

WEIGHT



GEARBOX	

PART	WEIGHT(Kg)	
MOTOR	2.1	
GEAR BOX	8GBK3BMH ~ 8GBK18BMH	0.56
	8GBK20BMH ~ 8GBK40BMH	0.65
	8GBK50BMH ~ 8GBK360BMH	0.72
	8WD□BL/BR/BRL	0.68
8XD10□□	0.45	

B AC Motors

S.C. Brake Motor 15W (□80mm)

Motor Images



S.C. Brake Motor 25W (□80mm)

25W

Speed Control
Brake Motor
25W(□80mm)

Motor 사양

Model 8SBDG*-25□: Gear Type Shaft 8SBDG*-25: D-Cut Type Shaft	Output W	Voltage V	Frequency Hz	Poles	Duty	Speed Range r/min	Starting Torque		Permissible Torque				Capacitor μF / VAC
							kgfcm	N.m	1200r/min		90r/min		
Lead Wire Type									kgfcm	N.m	kgfcm	N.m	
8SBDG1(A)-25□	25	1φ110	60	4	30min.	90-1700	1.80	0.180	2.30	0.230	0.60	0.060	10.0 / 250
8SBDG2(D)-25□	25	1φ220	60	4	30min.	90-1700	1.80	0.180	2.30	0.230	0.60	0.060	2.5 / 450
8SBDGE-25□	25	1φ220	50	4	30min.	90-1400	1.60	0.160	2.10	0.210	0.55	0.055	2.5 / 450
		1φ240					1.80	0.180	2.30	0.230	0.65	0.065	

1) 모터 모델명 * 자리에는 전압코드가, □ 안에는 부착되는 감속기의 모델 타입명이 들어갑니다. 2) 전압코드 A, D, E는 TP(Thermal Protector) 부착 사양입니다.
3) Gear Type Shaft는 감속기 부착용이며 D-Cut Type Shaft는 모터 단독 사용시의 출력축입니다.

감속기 부착 시 최대허용토크

Motor Model	Gearbox Model	회전속도 r/min	전압 V	주파수 Hz	감속비	3	3.6	5	6	7.5	9	10	12.5	15	18	20	25	30	36
8SBDG*-25G	8GBK□BMH	1200	110	60	kgfcm	5.6	6.7	9.3	11.2	14.0	16.8	18.6	23.3	27.9	33.5	33.6	42.0	50.4	60.4
					N.m	0.55	0.66	0.91	1.10	1.37	1.64	1.83	2.28	2.74	3.29	3.29	4.11	4.94	5.92
			220	60	kgfcm	5.6	6.7	9.3	11.2	14.0	16.8	18.6	23.3	27.9	33.5	33.6	42.0	50.4	60.4
		220/240	50	N.m	0.55	0.66	0.91	1.10	1.37	1.64	1.83	2.28	2.74	3.29	3.29	4.11	4.94	5.92	
		90	110	60	kgfcm	1.5	1.7	2.4	2.9	3.6	4.4	4.9	6.1	7.3	8.7	8.8	11.0	13.1	15.8
					N.m	0.14	0.17	0.24	0.29	0.36	0.43	0.48	0.60	0.71	0.86	0.86	1.07	1.29	1.55
220	60		kgfcm	1.5	1.7	2.4	2.9	3.6	4.4	4.9	6.1	7.3	8.7	8.8	11.0	13.1	15.8		
220/240	50	N.m	0.14	0.17	0.24	0.29	0.36	0.43	0.48	0.60	0.71	0.86	0.86	1.07	1.29	1.55			
220/240	50	kgfcm	1.6	1.9	2.6	3.2	3.9	4.7	5.3	6.6	7.9	9.5	9.5	11.9	14.2	17.1			
N.m	0.15	0.19	0.26	0.31	0.39	0.46	0.52	0.64	0.77	0.93	0.93	1.16	1.40	1.67					

Motor Model	Gearbox Model	회전속도 r/min	전압 V	주파수 Hz	감속비	40	50	60	75	90	100	120	150	180	200	250	300	360
8SBDG*-25G	8GBK□BMH	1200	110	60	kgfcm	67.2	75.9	80.0	80.0	80.0	80.0	80.0	80.0	80.0	80.0	80.0	80.0	80.0
					N.m	6.58	7.44	7.84	7.84	7.84	7.84	7.84	7.84	7.84	7.84	7.84	7.84	7.84
			220	60	kgfcm	67.2	75.9	80.0	80.0	80.0	80.0	80.0	80.0	80.0	80.0	80.0	80.0	80.0
		220/240	50	N.m	6.58	7.44	7.84	7.84	7.84	7.84	7.84	7.84	7.84	7.84	7.84	7.84	7.84	7.84
		90	110	60	kgfcm	17.5	19.8	23.8	29.7	35.6	39.6	47.5	59.4	71.3	79.2	80.0	80.0	80.0
					N.m	1.72	1.94	2.33	2.91	3.49	3.88	4.66	5.82	6.99	7.76	7.84	7.84	7.84
220	60		kgfcm	17.5	19.8	23.8	29.7	35.6	39.6	47.5	59.4	71.3	79.2	80.0	80.0	80.0		
220/240	50	N.m	1.72	1.94	2.33	2.91	3.49	3.88	4.66	5.82	6.99	7.76	7.84	7.84	7.84			
220/240	50	kgfcm	19.0	21.5	25.7	32.2	38.6	42.9	51.5	64.4	77.2	80.0	80.0	80.0	80.0			
N.m	1.86	2.10	2.52	3.15	3.78	4.20	5.05	6.31	7.57	7.84	7.84	7.84	7.84					

Motor Model	Gearbox Model	회전속도 r/min	전압 V	주파수 Hz	감속비	10	12	15	18	25	30	36	50	60
8SBDG*-25W	8WD□BL/□BR/□BRL	1200	110	60	kgfcm	18.9	22.1	26.6	30.6	40.3	45.5	53.0	69.0	75.9
					N.m	1.85	2.16	2.60	3.00	3.94	4.46	5.19	6.76	7.44
			220	60	kgfcm	19.1	22.9	28.6	34.4	47.7	57.3	68.7	95.5	81.6
		220/240	50	N.m	1.87	2.24	2.81	3.37	4.68	5.61	6.73	9.35	8.00	
		90	110	60	kgfcm	18.9	22.1	26.6	30.6	40.3	45.5	53.0	69.0	75.9
					N.m	1.85	2.16	2.60	3.00	3.94	4.46	5.19	6.76	7.44
220	60		kgfcm	4.9	5.8	6.9	8.0	10.5	11.9	13.8	18.0	19.8		
220/240	50	N.m	0.48	0.56	0.68	0.78	1.03	1.16	1.35	1.76	1.94			
220	60	kgfcm	4.9	5.8	6.9	8.0	10.5	11.9	13.8	18.0	19.8			
220/240	50	N.m	0.48	0.56	0.68	0.78	1.03	1.16	1.35	1.76	1.94			
220/240	50	kgfcm	5.3	6.2	7.5	8.7	11.4	12.9	15.0	19.5	21.5			
N.m	0.52	0.61	0.74	0.85	1.11	1.26	1.47	1.91	2.10					

1) 모터 모델명 * 자리에는 전압코드가 들어갑니다. 2) 감속기 모델명 □ 안에는 감속비가 들어갑니다.
3) 위의 표에서 색칠된 범위의 감속비를 선택했을 때 감속기의 출력축은 모터의 출력축과 같은 방향으로 회전합니다.
흰색 바탕 범위의 감속비에서는 감속기 출력축은 모터 출력축의 회전방향과 반대방향으로 회전합니다.
4) 회전속도(r/min)는 모터의 동기회전속도(50Hz:1500r/min, 60Hz:1800r/min)를 감속비로 나누어 계산합니다. 실제 회전속도는 부하의 크기에 따라 표시보다 2~20% 정도 느립니다.

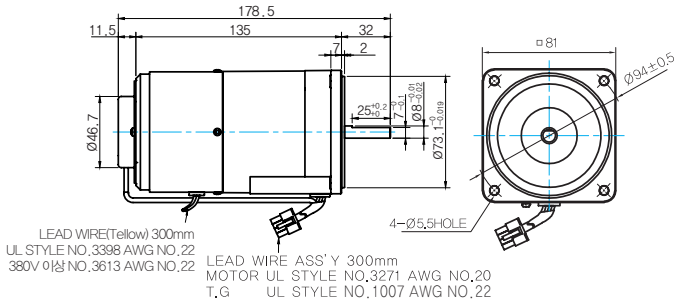
B AC Motors

S.C. Brake Motor 25W (□80mm)

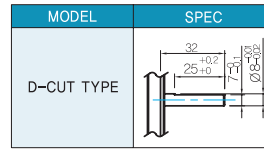
Dimensions

MOTOR ONLY

- MOTOR MODEL: 8SBDD□-25 (NO FAN)

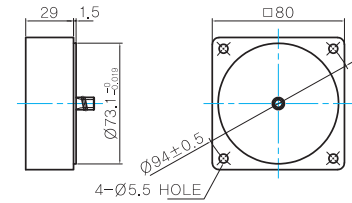


- MOTOR OUTPUT SHAFT



중간감속기

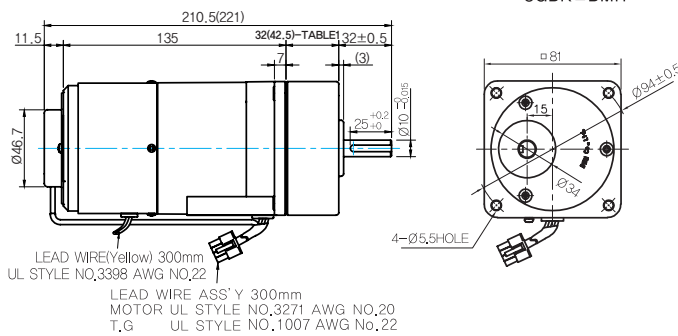
- MODEL: 8XD10□□



GEARED MOTOR

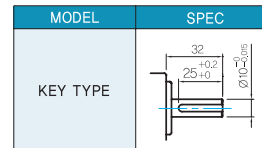
G TYPE GEARBOX

- MOTOR MODEL: 8SBDG□-25G (NO FAN)

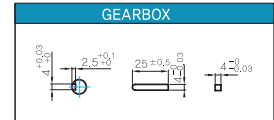


- GEARBOX MODEL: 8GBK□BMH

- GEARBOX OUTPUT SHAFT



- KEY SPEC

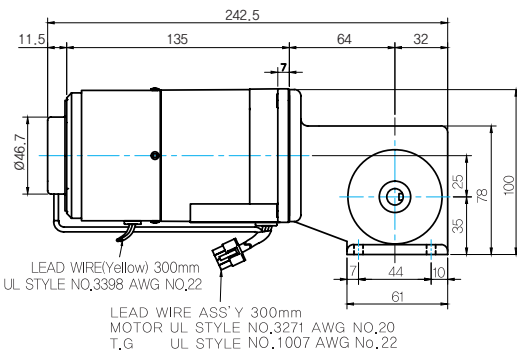


- 32(42.5)-Table1

SIZE(mm)	GEAR RATIO
32	8GBK3BMH ~ 8GBK18BMH
42.5	8GBK20BMH ~ 8GBK360BMH

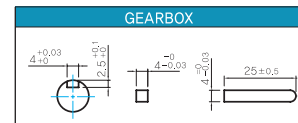
W TYPE GEARBOX

- MOTOR MODEL: 8SBDG□-25W (NO FAN)



- GEARBOX MODEL: 8WD□BL/BR/BRL

- KEY SPEC



WEIGHT

	PART	WEIGHT(Kg)
GEAR BOX	MOTOR	2.1
	8GBK3BMH ~ 8GBK18BMH	0.56
	8GBK20BMH ~ 8GBK40BMH	0.65
	8GBK50BMH ~ 8GBK360BMH	0.72
	8WD□BL/BR/BRL	0.68
	8XD10□□	0.45

 **Motor Images**

8SBDD□-25	8SBDG□-25G+8GBK□BMH	8SBDG□-25W+8WD□BL
		

B AC Motors

S.C. Brake Motor 40W (□90mm)

40W

Speed Control
Brake Motor
40W(□90mm)

Motor 사양

Model 9SBDG*-40□: Gear Type Shaft 9SBD*-40: D-Cut Type Shaft 9SBDK*-40: Key Type Shaft	Output W	Voltage V	Frequency Hz	Poles	Duty	Speed Range r/min	Starting Torque kgfcm N.m		Permissible Torque				Capacitor μF / VAC
									1200r/min		90r/min		
									kgfcm	N.m	kgfcm	N.m	
9SBDG1(A)-40□	40	1φ110	60	4	30min.	90-1700	3.40	0.340	3.00	0.300	0.85	0.085	16.0 / 250
9SBDG2(D)-40□	40	1φ220	60	4	30min.	90-1700	3.30	0.330	3.00	0.300	0.85	0.085	4.0 / 450
9SBDGE-40□	40	1φ220	50	4	30min.	90-1400	3.00	0.300	2.60	0.260	0.80	0.080	4.0 / 450
		3.30					0.330	3.20	0.320	0.90	0.090		

- 1) 모터 모델명 * 자리에는 전압코드가, □ 안에는 부착되는 감속기의 모델 타입명이 들어갑니다.
- 2) 전압코드 A, D, E는 TP(Thermal Protector) 부착 사양입니다.
- 3) Gear Type Shaft는 감속기 부착용이며 D-Cut 및 Key Type Shaft는 모터 단독 사용시의 출력축입니다.

감속기 부착 시 최대허용토크

Motor Model	Gear box Model	회전 속도 r/min	전압 V	주파수 Hz	감속비	2	3	3.6	5	6	7.5	9	10	12.5	15	18	20	25	30	36	40	50	60	75	90	100	120	150	180	200				
9SBDG*-40G	9GBK □BMH	1200	110	60	kgfcm	4.9	7.3	8.7	12.2	14.6	18.2	21.9	24.3	30.4	36.5	43.7	43.8	54.8	65.7	78.8	87.6	99.0	100.0	100.0	100.0	100.0	100.0	100.0	100.0	100.0	100.0			
					N.m	0.48	0.71	0.86	1.19	1.43	1.79	2.14	2.38	2.98	3.57	4.29	4.29	5.37	6.44	7.73	8.58	9.70	9.80	9.80	9.80	9.80	9.80	9.80	9.80	9.80	9.80	9.80	9.80	9.80
					kgfcm	4.9	7.3	8.7	12.2	14.6	18.2	21.9	24.3	30.4	36.5	43.7	43.8	54.8	65.7	78.8	87.6	99.0	100.0	100.0	100.0	100.0	100.0	100.0	100.0	100.0	100.0	100.0	100.0	100.0
		N.m	0.48	0.71	0.86	1.19	1.43	1.79	2.14	2.38	2.98	3.57	4.29	4.29	5.37	6.44	7.73	8.58	9.70	9.80	9.80	9.80	9.80	9.80	9.80	9.80	9.80	9.80	9.80	9.80	9.80	9.80	9.80	
		kgfcm	4.2	6.3	7.6	10.5	12.6	15.8	19.0	21.1	26.3	31.6	37.9	38.0	47.5	56.9	68.3	75.9	85.8	100.0	100.0	100.0	100.0	100.0	100.0	100.0	100.0	100.0	100.0	100.0	100.0	100.0	100.0	
		N.m	0.41	0.62	0.74	1.03	1.24	1.55	1.86	2.06	2.58	3.10	3.71	3.72	4.65	5.58	6.70	7.44	8.41	9.80	9.80	9.80	9.80	9.80	9.80	9.80	9.80	9.80	9.80	9.80	9.80	9.80	9.80	
	90	110	60	kgfcm	1.4	2.1	2.5	3.4	4.1	5.2	6.2	6.9	8.6	10.3	12.4	12.4	15.5	18.6	22.3	24.8	28.1	33.7	42.1	50.5	56.1	67.3	84.2	100.0	100.0	100.0	100.0	100.0		
				N.m	0.13	0.20	0.24	0.34	0.40	0.51	0.61	0.67	0.84	1.01	1.21	1.22	1.52	1.82	2.19	2.43	2.75	3.30	4.12	4.95	5.50	6.60	8.25	9.80	9.80	9.80	9.80	9.80	9.80	
				kgfcm	1.4	2.1	2.5	3.4	4.1	5.2	6.2	6.9	8.6	10.3	12.4	12.4	15.5	18.6	22.3	24.8	28.1	33.7	42.1	50.5	56.1	67.3	84.2	100.0	100.0	100.0	100.0	100.0	100.0	100.0
		N.m	0.13	0.20	0.24	0.34	0.40	0.51	0.61	0.67	0.84	1.01	1.21	1.22	1.52	1.82	2.19	2.43	2.75	3.30	4.12	4.95	5.50	6.60	8.25	9.80	9.80	9.80	9.80	9.80	9.80	9.80		
		kgfcm	1.3	1.9	2.3	3.2	3.9	4.9	5.8	6.5	8.1	9.7	11.7	11.7	14.6	17.5	21.0	23.4	26.4	31.7	39.6	47.5	52.8	63.4	79.2	95.0	100.0	100.0	100.0	100.0	100.0	100.0		
		N.m	0.13	0.19	0.23	0.32	0.38	0.48	0.57	0.64	0.79	0.95	1.14	1.14	1.43	1.72	2.06	2.29	2.59	3.10	3.88	4.66	5.17	6.21	7.76	9.31	9.80	9.80	9.80	9.80	9.80	9.80		

Motor Model	Gearbox Model	회전속도 r/min	전압 V	주파수 Hz	감속비	10	12	15	18	25	30	36	50	60
9SBDG*-40W	9WD □BL/□BR/□BRL	1200	110	60	kgfcm	24.6	28.8	34.7	40.0	52.5	59.4	69.1	90.0	99.0
					N.m	2.41	2.82	3.40	3.92	5.15	5.82	6.77	8.82	9.70
					kgfcm	24.9	29.9	37.4	44.8	62.3	74.7	89.6	124.5	122.4
		N.m	2.44	2.93	3.66	4.39	6.10	7.32	8.78	12.20	12.00			
		kgfcm	26.2	30.7	37.0	42.6	56.0	63.4	73.7	96.0	105.6			
		N.m	2.57	3.01	3.62	4.18	5.49	6.21	7.23	9.41	10.35			
	90	110	60	kgfcm	7.0	8.2	9.8	11.3	14.9	16.8	19.6	25.5	28.1	
				N.m	0.68	0.80	0.96	1.11	1.46	1.65	1.92	2.50	2.75	
				kgfcm	7.0	8.2	9.8	11.3	14.9	16.8	19.6	25.5	28.1	
		N.m	0.68	0.80	0.96	1.11	1.46	1.65	1.92	2.50	2.75			
		kgfcm	7.4	8.6	10.4	12.0	15.8	17.8	20.7	27.0	29.7			
		N.m	0.72	0.85	1.02	1.17	1.54	1.75	2.03	2.65	2.91			

- 1) 모터 모델명 * 자리에는 전압코드가 들어갑니다.
- 2) 감속기 모델명 □ 안에는 감속비가 들어갑니다.
- 3) 위의 표에서 색칠된 범위의 감속비를 선택했을 때 감속기의 출력축은 모터의 출력축과 같은 방향으로 회전합니다.
흰색 바탕 범위의 감속비에서는 감속기 출력축은 모터 출력축의 회전방향과 반대방향으로 회전합니다.
- 4) 회전속도(r/min)는 모터의 동기회전속도(50Hz:1500r/min, 60Hz:1800r/min)를 감속비로 나누어 계산합니다. 실제 회전속도는 부하의 크기에 따라 표시보다 2~20% 정도 느립니다.

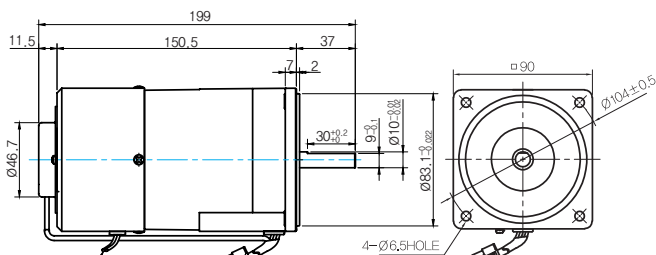
Motor Model	Gearbox Model	회전속도 r/min	전압 V	주파수 Hz	감속비	2	3	3.6	5	6	7.5	9	10	12.5	15	18	20	25	30
9SBDG* -40P	9PBK□BH 9PFK□BH	1200	110	60	kgfcm	4.9	7.3	8.7	12.2	14.6	18.2	21.9	24.3	27.4	32.9	39.4	43.8	49.5	59.4
					N.m	0.48	0.71	0.86	1.19	1.43	1.79	2.14	2.38	2.68	3.22	3.86	4.29	4.85	5.82
					kgfcm	4.9	7.3	8.7	12.2	14.6	18.2	21.9	24.3	27.4	32.9	39.4	43.8	49.5	59.4
			N.m	0.48	0.71	0.86	1.19	1.43	1.79	2.14	2.38	2.68	3.22	3.86	4.29	4.85	5.82		
			kgfcm	4.2	6.3	7.6	10.5	12.6	15.8	19.0	21.1	23.7	28.5	34.2	38.0	42.9	51.5		
			N.m	0.41	0.62	0.74	1.03	1.24	1.55	1.86	2.06	2.33	2.79	3.35	3.72	4.20	5.05		
		90	110	60	kgfcm	1.4	2.1	2.5	3.4	4.1	5.2	6.2	6.9	7.8	9.3	11.2	12.4	14.0	16.8
					N.m	0.13	0.20	0.24	0.34	0.40	0.51	0.61	0.67	0.76	0.91	1.09	1.22	1.37	1.65
					kgfcm	1.4	2.1	2.5	3.4	4.1	5.2	6.2	6.9	7.8	9.3	11.2	12.4	14.0	16.8
			N.m	0.13	0.20	0.24	0.34	0.40	0.51	0.61	0.67	0.76	0.91	1.09	1.22	1.37	1.65		
			kgfcm	1.3	1.9	2.3	3.2	3.9	4.9	5.8	6.5	7.3	8.8	10.5	11.7	13.2	15.8		
			N.m	0.13	0.19	0.23	0.32	0.38	0.48	0.57	0.64	0.72	0.86	1.03	1.14	1.29	1.55		

Motor Model	Gearbox Model	회전속도 r/min	전압 V	주파수 Hz	감속비	36	40	50	60	75	90	100	120	150	180	200
9SBDG* -40P	9PBK□BH 9PFK□BH	1200	110	60	kgfcm	71.3	79.2	99.0	118.8	132.8	159.3	177.0	200.0	200.0	200.0	200.0
					N.m	6.99	7.76	9.70	11.64	13.01	15.61	17.35	19.60	19.60	19.60	19.60
					kgfcm	71.3	79.2	99.0	118.8	132.8	159.3	177.0	200.0	200.0	200.0	200.0
			N.m	6.99	7.76	9.70	11.64	13.01	15.61	17.35	19.60	19.60	19.60	19.60		
			kgfcm	61.8	68.6	85.8	103.0	115.1	138.1	153.4	184.1	200.0	200.0	200.0		
			N.m	6.05	6.73	8.41	10.09	11.27	13.53	15.03	18.04	19.60	19.60	19.60		
		90	110	60	kgfcm	20.2	22.4	28.1	33.7	37.6	45.1	50.2	60.2	75.2	90.3	100.3
					N.m	1.98	2.20	2.75	3.30	3.69	4.42	4.91	5.90	7.37	8.85	9.83
					kgfcm	20.2	22.4	28.1	33.7	37.6	45.1	50.2	60.2	75.2	90.3	100.3
			N.m	1.98	2.20	2.75	3.30	3.69	4.42	4.91	5.90	7.37	8.85	9.83		
			kgfcm	19.0	21.1	26.4	31.7	35.4	42.5	47.2	56.6	70.8	85.0	94.4		
			N.m	1.86	2.07	2.59	3.10	3.47	4.16	4.63	5.55	6.94	8.33	9.25		

Dimensions

MOTOR ONLY

- MOTOR MODEL: 9SBD□-40 (NO FAN)



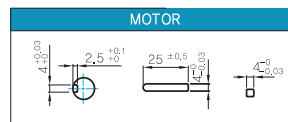
LEAD WIRE (Yellow) 300mm
UL STYLE NO. 3398 AWG NO. 22
380V 이상 NO. 3613 AWG NO. 22

LEAD WIRE ASS'Y 300mm
MOTOR UL STYLE NO. 3271 AWG NO. 20
T,G UL STYLE NO. 1007 AWG NO. 22

MOTOR OUTPUT SHAFT

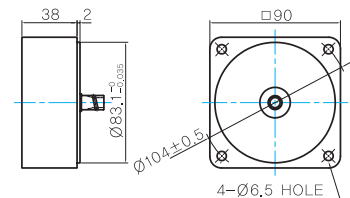
MODEL	SPEC
D-CUT TYPE	
9SBD□-40	
KEY TYPE	
9SBDK□-40	

KEY SPEC



중간감속기

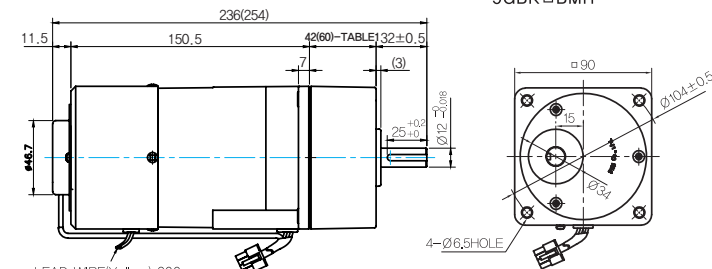
- MODEL: 9XD10□□



GEARED MOTOR

G TYPE GEARBOX

- MOTOR MODEL: 9SBDG□-40G (NO FAN)
- GEARBOX MODEL: 9GBK□BMH



LEAD WIRE (Yellow) 300mm
UL STYLE NO. 3398 AWG NO. 22

LEAD WIRE ASS'Y 300mm
MOTOR UL STYLE NO. 3271 AWG NO. 20
T,G UL STYLE NO. 1007 AWG NO. 22

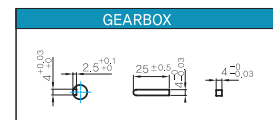
GEARBOX OUTPUT SHAFT

MODEL	SPEC
KEY TYPE	

42(60)-Table1

SIZE(mm)	GEAR RATIO
42	9GBK2BMH - 9GBK18BMH
60	9GBK20BMH - 9GBK200BMH

KEY SPEC



B AC Motors

S.C. Brake Motor 40W (□90mm)

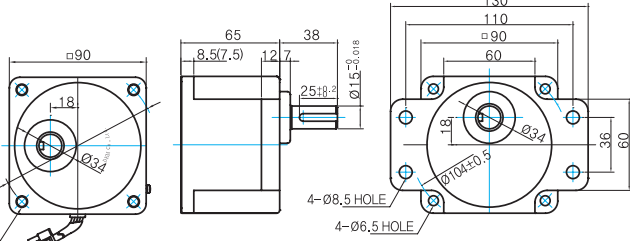
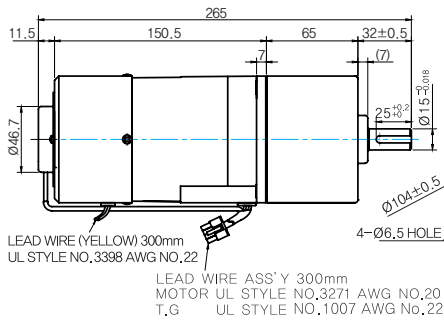
P TYPE GEARBOX

● MOTOR MODEL:
9SBDG □ -40P (NO FAN)

● GEARBOX MODEL:
9PBK □ BH

● GEARBOX MODEL:
9PFK □ BH

● GEARBOX OUTPUT SHAFT



MODEL	SPEC
KEY TYPE	
9PBK □ BH	
9PFK □ BH	

● KEY SPEC

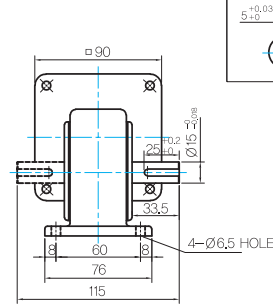
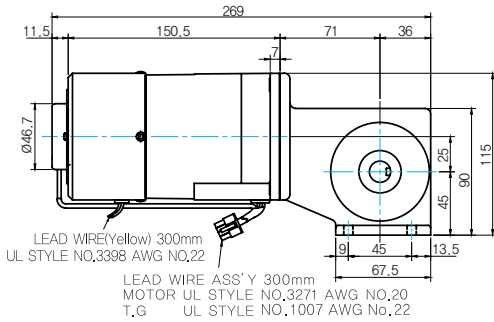
GEARBOX	

W TYPE GEARBOX

● MOTOR MODEL:
9SBDG □ -40W (NO FAN)

● GEARBOX MODEL:
9WD □ BL/BR/BRL

● KEY SPEC

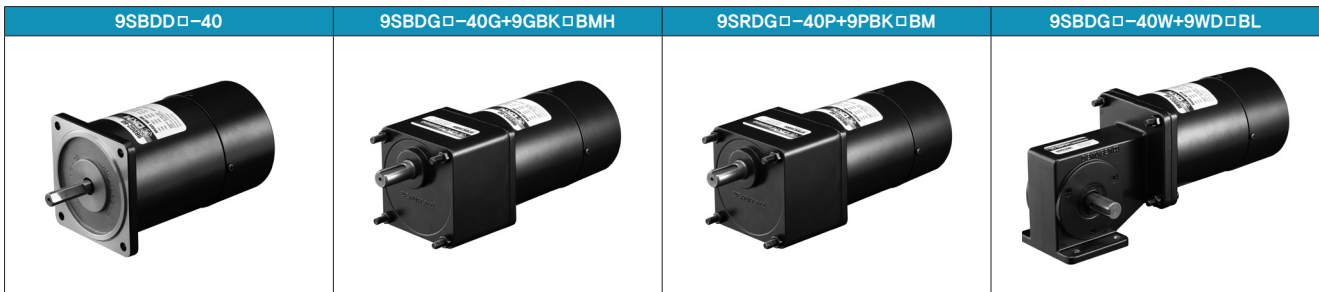


GEARBOX	

WEIGHT

PART	WEIGHT(Kg)	
MOTOR	3,1	
GEAR BOX	9GBK2BMH ~ 9GBK18BMH	0,78
	9GBK20BMH ~ 9GBK40BMH	1,1
	9GBK50BMH ~ 9GBK200BMH	1,2
	9PB(F)K2BH ~ 9PB(F)K10BH	1,28
	9PB(F)K12.5BH ~ 9PB(F)K20BH	1,3
	9PB(F)K25BH ~ 9PB(F)K60BH	1,45
	9PB(F)K75BH ~ 9PB(F)K200BH	1,47
	9WD □ BL/BR/BRL	1,0
	9XD10 □	0,6

Motor Images



S.C. Brake Motor 60W (□90mm)

60W

Speed Control
Brake Motor
60W(□90mm)

Motor 사양

Model 9SBDG*~60F2□: Gear Type Shaft 9SBD*~60F2: D-Cut Type Shaft 9SBDK*~60F2: Key Type Shaft	Output W	Voltage V	Frequency Hz	Poles	Duty	Speed Range r/min	Starting Torque		Permissible Torque				Capacitor μF / VAC	
							kgfcm	N.m	1200r/min		90r/min			
									kgfcm	N.m	kgfcm	N.m		
Lead Wire Type														
9SBDG1(A)-60F2□	60	1φ110	60	4	30min.	90-1700	5.00	0.500	5.40	0.540	2.80	0.280	20.0 / 250	
9SBDG2(D)-60F2□	60	1φ220	60	4	30min.	90-1700	5.00	0.500	5.30	0.530	2.70	0.270	6.0 / 450	
9SBDGE-60F2□	60	1φ220	50	4	30min.	90-1400	5.00	0.500	5.20	0.520	2.70	0.270	6.0 / 450	
		1φ240					5.50	0.550	5.80	0.580	2.90	0.290		

- 1) 모터 모델명 * 자리에는 전압코드가, □ 안에는 부착되는 감속기의 모델 타입명이 들어갑니다.
- 2) 전압코드 A, D, E는 TP(Thermal Protector) 부착 사양입니다.
- 3) Gear Type Shaft는 감속기 부착용이며 D-Cut 및 Key Type Shaft는 모터 단독 사용시의 출력축입니다.

감속기 부착 시 최대허용토크

Motor Model	Gearbox Model	회전속도 r/min	전압 V	주파수 Hz	감속비	2	3	3.6	5	6	7.5	9	10	12.5	15	18	20	25
9SBDG*~60F2P	9PBK□BH 9PFK□BH	1200	110	60	kgfcm	8.7	13.1	15.7	21.9	26.2	32.8	39.4	43.7	49.3	59.1	71.0	78.8	89.1
					N.m	0.86	1.29	1.54	2.14	2.57	3.21	3.86	4.29	4.83	5.79	6.95	7.73	8.73
					kgfcm	8.6	12.9	15.5	21.5	25.8	32.2	38.6	42.9	48.4	58.0	69.6	77.4	87.5
		90	220/240	50	kgfcm	8.4	12.6	15.2	21.1	25.3	31.6	37.9	42.1	47.5	56.9	68.3	75.9	85.8
					N.m	0.83	1.24	1.49	2.06	2.48	3.10	3.71	4.13	4.65	5.58	6.70	7.44	8.41
					kgfcm	4.5	6.8	8.2	11.3	13.6	17.0	20.4	22.7	25.6	30.7	36.8	40.9	46.2
90	220/240	60	kgfcm	4.4	6.6	7.9	10.9	13.1	16.4	19.7	21.9	24.6	29.6	35.5	39.4	44.6		
			N.m	0.44	0.67	0.80	1.11	1.33	1.67	2.00	2.22	2.50	3.00	3.61	4.01	4.53		
			kgfcm	4.4	6.6	7.9	10.9	13.1	16.4	19.7	21.9	24.6	29.6	35.5	39.4	44.6		
90	220/240	50	kgfcm	4.4	6.6	7.9	10.9	13.1	16.4	19.7	21.9	24.6	29.6	35.5	39.4	44.6		
			N.m	0.43	0.64	0.77	1.07	1.29	1.61	1.93	2.14	2.41	2.90	3.48	3.86	4.37		
			kgfcm	4.4	6.6	7.9	10.9	13.1	16.4	19.7	21.9	24.6	29.6	35.5	39.4	44.6		
90	220/240	50	kgfcm	4.4	6.6	7.9	10.9	13.1	16.4	19.7	21.9	24.6	29.6	35.5	39.4	44.6		
			N.m	0.43	0.64	0.77	1.07	1.29	1.61	1.93	2.14	2.41	2.90	3.48	3.86	4.37		
			kgfcm	4.4	6.6	7.9	10.9	13.1	16.4	19.7	21.9	24.6	29.6	35.5	39.4	44.6		

Motor Model	Gearbox Model	회전속도 r/min	전압 V	주파수 Hz	감속비	30	36	40	50	60	75	90	100	120	150	180	200
9SBDG*~60F2P	9PBK□BH 9PFK□BH	1200	110	60	kgfcm	106.9	128.3	142.6	178.2	200.0	200.0	200.0	200.0	200.0	200.0	200.0	200.0
					N.m	10.48	12.57	13.97	17.46	19.60	19.60	19.60	19.60	19.60	19.60	19.60	19.60
					kgfcm	104.9	125.9	139.9	174.9	200.0	200.0	200.0	200.0	200.0	200.0	200.0	200.0
		90	220/240	50	kgfcm	103.0	123.6	137.3	171.6	200.0	200.0	200.0	200.0	200.0	200.0	200.0	
					N.m	10.09	12.11	13.45	16.82	19.60	19.60	19.60	19.60	19.60	19.60	19.60	
					kgfcm	55.4	66.5	73.9	92.4	110.9	123.9	148.7	165.2	198.2	200.0	200.0	
90	220/240	60	kgfcm	54.3	65.2	72.4	90.6	10.87	12.14	14.57	16.19	19.43	19.60	19.60			
			N.m	5.43	6.52	7.24	9.06	10.87	12.14	14.57	16.19	19.43	19.60	19.60			
			kgfcm	53.5	64.2	71.3	89.1	106.9	119.5	143.4	159.3	191.2	200.0	200.0			
90	220/240	50	kgfcm	52.4	62.9	6.99	8.73	10.48	11.71	14.05	15.61	18.73	19.60	19.60			
			N.m	5.24	6.29	6.99	8.73	10.48	11.71	14.05	15.61	18.73	19.60	19.60			
			kgfcm	53.5	64.2	71.3	89.1	106.9	119.5	143.4	159.3	191.2	200.0	200.0			
90	220/240	50	kgfcm	52.4	62.9	6.99	8.73	10.48	11.71	14.05	15.61	18.73	19.60	19.60			
			N.m	5.24	6.29	6.99	8.73	10.48	11.71	14.05	15.61	18.73	19.60	19.60			
			kgfcm	52.4	62.9	6.99	8.73	10.48	11.71	14.05	15.61	18.73	19.60	19.60			

Motor Model	Gearbox Model	회전속도 r/min	전압 V	주파수 Hz	감속비	3	3.6	5	6	7.5	9	10	12.5	15	18	20	25	30
9SBDG*~60F2H	9HBK□BH 9HFK□BH	1200	110	60	kgfcm	13.1	15.7	21.9	26.2	32.8	39.4	43.7	49.3	59.1	71.0	78.8	89.1	106.9
					N.m	1.29	1.54	2.14	2.57	3.21	3.86	4.29	4.83	5.79	6.95	7.73	8.73	10.48
					kgfcm	12.9	15.5	21.5	25.8	32.2	38.6	42.9	48.4	58.0	69.6	77.4	87.5	104.9
		90	220/240	50	kgfcm	12.6	15.2	21.1	25.3	31.6	37.9	42.1	47.5	56.9	68.3	75.9	85.8	103.0
					N.m	1.24	1.49	2.06	2.48	3.10	3.71	4.13	4.65	5.58	6.70	7.44	8.41	10.09
					kgfcm	6.8	8.2	11.3	13.6	17.0	20.4	22.7	25.6	30.7	36.8	40.9	46.2	55.4
90	220/240	60	kgfcm	6.6	7.9	10.9	13.1	16.4	19.7	21.9	24.6	29.6	35.5	39.4	44.6	53.5		
			N.m	0.64	0.77	1.07	1.29	1.61	1.93	2.14	2.41	2.90	3.48	3.86	4.37	5.24		
			kgfcm	6.6	7.9	10.9	13.1	16.4	19.7	21.9	24.6	29.6	35.5	39.4	44.6	53.5		
90	220/240	50	kgfcm	6.6	7.9	10.9	13.1	16.4	19.7	21.9	24.6	29.6	35.5	39.4	44.6	53.5		
			N.m	0.64	0.77	1.07	1.29	1.61	1.93	2.14	2.41	2.90	3.48	3.86	4.37	5.24		
			kgfcm	6.6	7.9	10.9	13.1	16.4	19.7	21.9	24.6	29.6	35.5	39.4	44.6	53.5		

감속기 부착 시 최대허용토크

Motor Model	Gear box Model	회전 속도 r/min	전압 V	주파수 Hz	감속비	36	40	50	60	75	90	100	120	150	180	200
9SBDG*~60F2H	9HBK□BH	1200	110	60	kgfcm N.m	128.3 12.57	142.6 13.97	178.2 17.46	213.8 20.96	239.0 23.42	286.7 28.10	300.0 29.40	300.0 29.40	300.0 29.40	300.0 29.40	300.0 29.40
			220	60	kgfcm N.m	125.9 12.34	139.9 13.71	174.9 17.14	209.9 20.57	234.5 22.98	281.4 27.58	300.0 29.40	300.0 29.40	300.0 29.40	300.0 29.40	300.0 29.40
		220/240	50	kgfcm N.m	123.6 12.11	137.3 13.45	171.6 16.82	205.9 20.18	230.1 22.55	276.1 27.06	300.0 29.40	300.0 29.40	300.0 29.40	300.0 29.40	300.0 29.40	300.0 29.40
	9HFK□BH	90	110	60	kgfcm N.m	66.5 6.52	73.9 7.24	92.4 9.06	110.9 10.87	123.9 12.14	148.7 14.57	165.2 16.19	198.2 19.43	247.8 24.28	297.4 29.14	300.0 29.40
			220	60	kgfcm N.m	64.2 6.29	71.3 6.99	89.1 8.73	106.9 10.48	119.5 11.71	143.4 14.05	159.3 15.61	191.2 18.73	239.0 23.42	286.7 28.10	300.0 29.40
		220/240	50	kgfcm N.m	64.2 6.29	71.3 6.99	89.1 8.73	106.9 10.48	119.5 11.71	143.4 14.05	159.3 15.61	191.2 18.73	239.0 23.42	286.7 28.10	300.0 29.40	

Motor Model	Gearbox Model	회전속도 r/min	전압 V	주파수 Hz	감속비	10	12	15	18	25	30	36	50	60
9SBDG*~60F2W	9WD□BL/□BR/□BRL	1200	110	60	kgfcm N.m	44.3 4.34	51.8 5.08	62.4 6.11	71.9 7.05	94.5 9.26	106.9 10.48	124.4 12.19	142.9 14.00	122.4 12.00
			220	60	kgfcm N.m	43.5 4.26	50.9 4.99	61.2 6.00	70.6 6.92	92.8 9.09	104.9 10.28	122.1 11.97	142.9 14.00	122.4 12.00
			220/240	50	kgfcm N.m	47.6 4.66	55.7 5.46	67.0 6.57	77.3 7.57	101.5 9.95	114.8 11.25	133.6 13.10	142.9 14.00	122.4 12.00
		90	110	60	kgfcm N.m	23.0 2.25	26.9 2.63	32.3 3.17	37.3 3.66	49.0 4.80	55.4 5.43	64.5 6.32	84.0 8.23	92.4 9.06
			220	60	kgfcm N.m	22.1 2.17	25.9 2.54	31.2 3.06	36.0 3.52	47.3 4.63	53.5 5.24	62.2 6.10	81.0 7.94	89.1 8.73
			220/240	50	kgfcm N.m	23.8 2.33	27.8 2.73	33.5 3.28	38.6 3.79	50.8 4.97	57.4 5.63	66.8 6.55	87.0 8.53	95.7 9.38

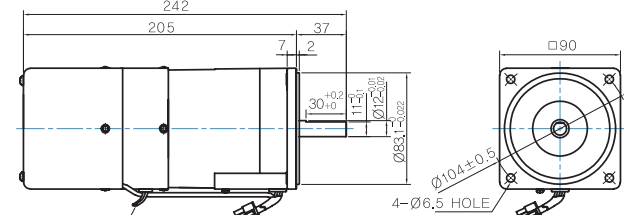
Motor Model	Gearbox Model	회전 속도 r/min	전압 V	주파수 Hz	감속비	7.5	10	15	20	25	30	40	50	60	80
9SBDG*~60F2WH	9WHD□-030	1200	110	60	kgfcm N.m	27.2 2.67	35.0 3.43	49.2 4.83	62.2 6.10	71.3 6.99	82.9 8.13	102.0 9.99	116.6 11.43	129.6 12.70	132.7 13.00
			220	60	kgfcm N.m	26.7 2.62	34.3 3.37	48.3 4.74	61.1 5.98	70.0 6.86	81.4 7.98	100.1 9.81	114.5 11.22	127.2 12.47	132.7 13.00
			220/240	50	kgfcm N.m	29.2 2.86	37.6 3.68	52.9 5.18	66.8 6.55	76.6 7.50	89.1 8.73	109.5 10.73	125.3 12.28	139.2 13.64	132.7 13.00
		90	110	60	kgfcm N.m	17.6 1.73	22.7 2.22	31.9 3.13	40.3 3.95	46.2 4.53	53.8 5.27	66.1 6.48	75.6 7.41	84.0 8.23	98.6 9.66
			220	60	kgfcm N.m	17.0 1.67	21.9 2.14	30.8 3.02	38.9 3.81	44.6 4.37	51.8 5.08	63.7 6.24	72.9 7.14	81.0 7.94	95.0 9.31
			220/240	50	kgfcm N.m	18.3 1.79	23.5 2.30	33.1 3.24	41.8 4.09	47.9 4.69	55.7 5.46	68.4 6.71	78.3 7.67	87.0 8.53	102.1 10.00

- 1) 모터 모델명 * 자리에는 전압코드가 들어갑니다.
- 2) 감속기 모델명 □ 안에는 감속비가 들어갑니다.
- 3) 위의 표에서 색칠된 범위의 감속비를 선택했을 때 감속기의 출력축은 모터의 출력축과 같은 방향으로 회전합니다.
흰색 바탕 범위의 감속비에서는 감속기 출력축은 모터 출력축의 회전방향과 반대방향으로 회전합니다.
- 4) 회전속도(r/min)는 모터의 동기회전속도(50Hz:1500r/min, 60Hz:1800r/min)를 감속비로 나누어 계산합니다.
실제 회전속도는 부하의 크기에 따라 표시보다 2~20% 정도 느립니다.

Dimensions

MOTOR ONLY

- MOTOR MODEL:
9SBDD□-60F2 (POWERFUL FAN)

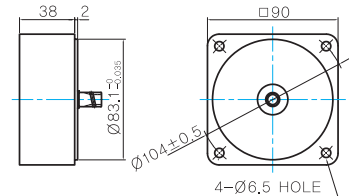


LEAD WIRE(Yellow) 300mm
UL STYLE NO.3398 AWG NO.22
380V OVER NO.3613 AWG NO.22

LEAD WIRE ASS'Y 300mm
MOTOR UL STYLE NO.3271 AWG NO.20
T,G UL STYLE NO.1007 AWG No.22

중간감속기

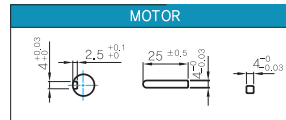
- MODEL: 9XD10□□



MOTOR OUTPUT SHAFT

MODEL	SPEC
D-CUT TYPE	
9SBDD□-60F2	
KEY TYPE	
9SBDK□-60F2	

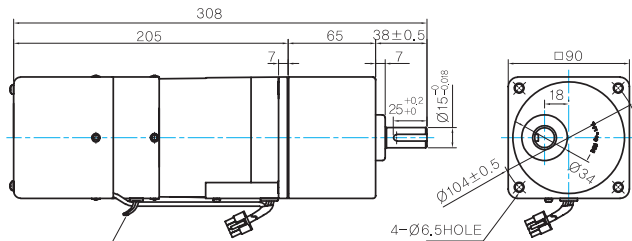
KEY SPEC



GEARED MOTOR

P TYPE GEARBOX

- MOTOR MODEL:
9SBDG□-60F2P (POWERFUL FAN)

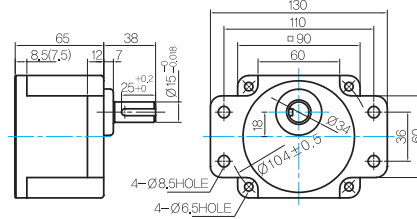


LEAD WIRE(Yellow) 300mm
UL STYLE NO.3398 AWG NO.22
380V OVER NO.3613 AWG NO.22

LEAD WIRE ASS'Y 300mm
MOTOR UL STYLE NO.3271 AWG NO.20
T,G UL STYLE NO.1007 AWG No.22

- GEARBOX MODEL:
9PBK□BH

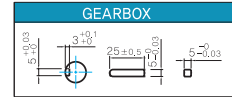
- GEARBOX MODEL:
9PFK□BH



GEARBOX OUTPUT SHAFT

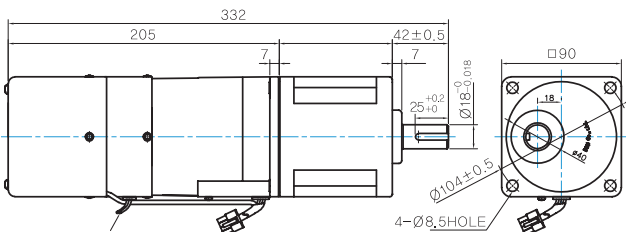
MODEL	SPEC
KEY TYPE	
9PBK□BH	
9PFK□BH	

KEY SPEC



H TYPE GEARBOX

- MOTOR MODEL:
9SBDG□-60F2H (POWERFUL FAN)

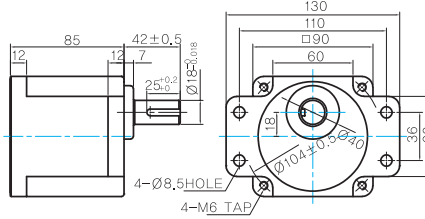


LEAD WIRE(Yellow) 300mm
UL STYLE NO.3398 AWG NO.22
380V OVER NO.3613 AWG NO.22

LEAD WIRE ASS'Y 300mm
MOTOR UL STYLE NO.3271 AWG NO.20
T,G UL STYLE NO.1007 AWG No.22

- GEARBOX MODEL:
9HBK□BH

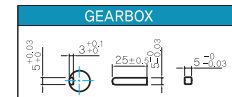
- GEARBOX MODEL:
9HFK□BH



GEARBOX OUTPUT SHAFT

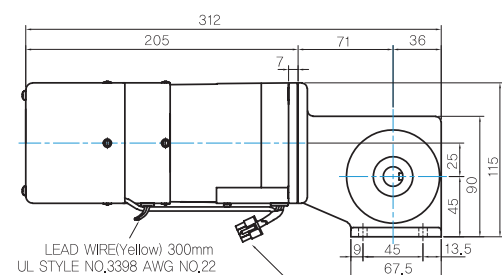
MODEL	SPEC
KEY TYPE	
9HBK□BH	
9HFK□BH	

KEY SPEC



W TYPE GEARBOX

- MOTOR MODEL:
9SBDG□-60F2W (POWERFUL FAN)

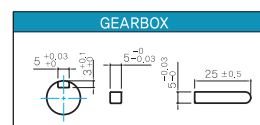


LEAD WIRE(Yellow) 300mm
UL STYLE NO.3398 AWG NO.22
380V OVER NO.3613 AWG NO.22

LEAD WIRE ASS'Y 300mm
MOTOR UL STYLE NO.3271 AWG NO.20
T,G UL STYLE NO.1007 AWG No.22

- GEARBOX MODEL:
9WD□BL/BR/BRL

KEY SPEC

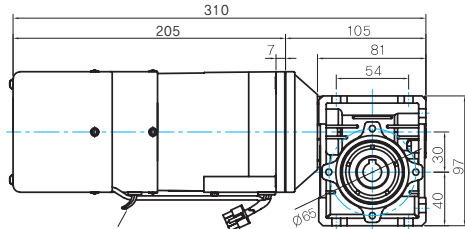


B AC Motors

S.C. Brake Motor 60W (□90mm)

WH TYPE GEARBOX

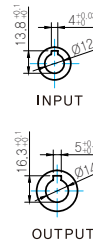
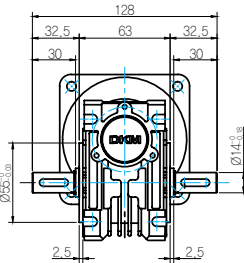
● MOTOR MODEL:
9SBDG□-60F2WH (POWERFUL FAN)



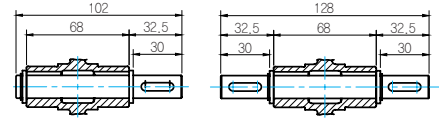
LEAD WIRE(Yellow) 300mm
UL STYLE NO.3398 AWG NO.22
380V OVER NO.3613 AWG NO.22

LEAD WIRE ASS'Y 300mm
MOTOR UL STYLE NO.3271 AWG NO.
T,G UL STYLE NO.1007 AWG No.

● GEARBOX MODEL:
9WHD□-030



● SHAFT



한방향

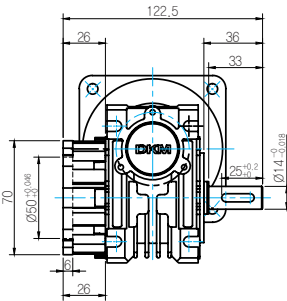
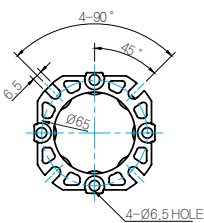
양방향

WEIGHT

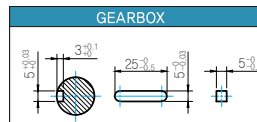
PART	WEIGHT(Kg)	
MOTOR	3,40	
GEAR BOX	9PB(F)K25BH - 9PB(F)K10BH	1,28
	9PB(F)K12.5BH - 9PB(F)K20BH	1,3
	9PB(F)K25BH - 9PB(F)K60BH	1,45
	9PB(F)K75BH - 9PB(F)K200BH	1,47
	9HB(F)K3BH - 9HB(F)K10BH	1,62
	9HB(F)K12.5BH - 9HB(F)K20BH	1,68
	9HB(F)K25BH - 9HB(F)K60BH	1,73
	9HB(F)K75BH - 9HB(F)K200BH	1,78
	9WD□BL/BR/BRL	1,0
	9WHD□-030	1,2
9XD10□	0,6	

* 출력 FLANGE와 SHAFT는 별매입니다.

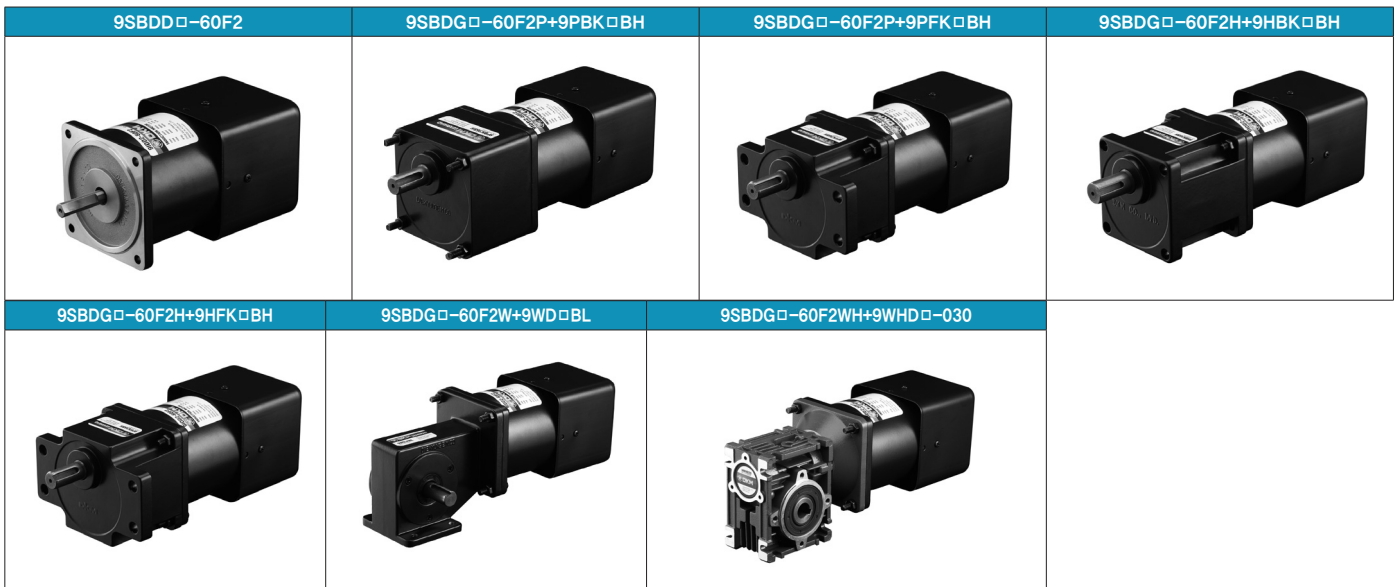
● FLANGE



● KEY SPEC



Motor Images



S.C. Brake Motor 90W (□90mm)

90W

Speed Control
Brake Motor
90W(□90mm)

Motor 사양

Model 9SBDG*-90F2□: Gear Type Shaft 9SBDG*-90F2: D-Cut Type Shaft 9SBDK*-60F2: Key Type Shaft	Output W	Voltage V	Frequency Hz	Poles	Duty	Speed Range r/min	Starting Torque kgfcm N.m		Permissible Torque				Capacitor μF / VAC
									1200r/min		90r/min		
									kgfcm	N.m	kgfcm	N.m	
9SBDG1(A)-90F2□	90	1φ110	60	4	30min.	90-1700	6.00	0.600	7.30	0.730	3.00	0.300	25.0 / 250
9SBDG2(D)-90F2□	90	1φ220	60	4	30min.	90-1700	6.00	0.600	7.30	0.730	3.00	0.300	6.5 / 450
9SBDGE-90F2□	90	1φ220	50	4	30min.	90-1400	5.50	0.550	7.00	0.700	2.80	0.280	6.5 / 450
		1φ240					6.00	0.600	7.50	0.750	3.30	0.330	

- 1) 모터 모델명 * 자리에는 전압코드가, □ 안에는 부착되는 감속기의 모델 타입명이 들어갑니다.
- 2) 전압코드 A, D, E는 TP(Thermal Protector) 부착 사양입니다.
- 3) Gear Type Shaft는 감속기 부착용이며 D-Cut 및 Key Type Shaft는 모터 단독 사용시의 출력축입니다.

감속기 부착 시 최대허용토크

Motor Model	Gearbox Model	회전속도 r/min	전압 V	주파수 Hz	감속비	2	3	3.6	5	6	7.5	9	10	12.5	15	18	20
9SBDG*-90F2P	9PBK□BH	1200	110	60	kgfcm	11.8	17.7	21.3	29.6	35.5	44.3	53.2	59.1	66.6	79.9	95.9	106.6
					N.m	1.16	1.74	2.09	2.90	3.48	4.35	5.22	5.79	6.53	7.83	9.40	10.44
					kgfcm	11.8	17.7	21.3	29.6	35.5	44.3	53.2	59.1	66.6	79.9	95.9	106.6
	9PFK□BH	90	110	60	kgfcm	4.9	7.3	8.7	12.2	14.6	18.2	21.9	24.3	27.4	32.9	39.4	43.8
					N.m	0.48	0.71	0.86	1.19	1.43	1.79	2.14	2.38	2.68	3.22	3.86	4.29
					kgfcm	4.9	7.3	8.7	12.2	14.6	18.2	21.9	24.3	27.4	32.9	39.4	43.8
		220/240	50	kgfcm	4.5	6.8	8.2	11.3	13.6	17.0	20.4	22.7	25.6	30.7	36.8	40.9	
				N.m	0.44	0.67	0.80	1.11	1.33	1.67	2.00	2.22	2.50	3.00	3.61	4.01	
				kgfcm	11.3	17.0	20.4	28.4	34.0	42.5	51.0	56.7	63.9	76.7	92.0	102.2	

Motor Model	Gearbox Model	회전속도 r/min	전압 V	주파수 Hz	감속비	25	30	36	40	50	60	75	90	100	120	150	180	200			
9SBDG*-90F2P	9PBK□BH	1200	110	60	kgfcm	120.5	144.5	173.4	192.7	200.0	200.0	200.0	200.0	200.0	200.0	200.0	200.0	200.0	200.0		
					N.m	11.80	14.16	17.00	18.89	19.60	19.60	19.60	19.60	19.60	19.60	19.60	19.60	19.60	19.60	19.60	19.60
					kgfcm	120.5	144.5	173.4	192.7	200.0	200.0	200.0	200.0	200.0	200.0	200.0	200.0	200.0	200.0	200.0	200.0
	9PFK□BH	90	110	60	kgfcm	49.5	59.4	71.3	79.2	99.0	118.8	132.8	159.3	177.0	200.0	200.0	200.0	200.0	200.0	200.0	
					N.m	4.85	5.82	6.99	7.76	9.70	11.64	13.01	15.61	17.35	19.60	19.60	19.60	19.60	19.60	19.60	
					kgfcm	49.5	59.4	71.3	79.2	99.0	118.8	132.8	159.3	177.0	200.0	200.0	200.0	200.0	200.0	200.0	200.0
		220/240	50	kgfcm	46.2	55.4	66.5	73.9	92.4	110.9	123.9	148.7	165.2	198.2	200.0	200.0	200.0	200.0	200.0		
				N.m	4.53	5.43	6.52	7.24	9.06	10.87	12.14	14.57	16.19	19.43	19.60	19.60	19.60				
				kgfcm	115.5	138.6	166.3	184.8	200.0	200.0	200.0	200.0	200.0	200.0	200.0	200.0	200.0	200.0	200.0		

Motor Model	Gearbox Model	회전속도 r/min	전압 V	주파수 Hz	감속비	3	3.6	5	6	7.5	9	10	12.5	15	18	20	25	30
9SBDG*-90F2H	9HBK□BH	1200	110	60	kgfcm	17.7	21.3	29.6	35.5	44.3	53.2	59.1	66.6	79.9	95.9	106.6	120.5	144.5
					N.m	1.74	2.09	2.90	3.48	4.35	5.22	5.79	6.53	7.83	9.40	10.44	11.80	14.16
					kgfcm	17.7	21.3	29.6	35.5	44.3	53.2	59.1	66.6	79.9	95.9	106.6	120.5	144.5
	9HFK□BH	90	110	60	kgfcm	7.3	8.7	12.2	14.6	18.2	21.9	24.3	27.4	32.9	39.4	43.8	49.5	59.4
					N.m	0.71	0.86	1.19	1.43	1.79	2.14	2.38	2.68	3.22	3.86	4.29	4.85	5.82
					kgfcm	7.3	8.7	12.2	14.6	18.2	21.9	24.3	27.4	32.9	39.4	43.8	49.5	59.4
		220/240	50	kgfcm	6.8	8.2	11.3	13.6	17.0	20.4	22.7	25.6	30.7	36.8	40.9	46.2	55.4	
				N.m	0.67	0.80	1.11	1.33	1.67	2.00	2.22	2.50	3.00	3.61	4.01	4.53	5.43	
				kgfcm	17.0	20.4	28.4	34.0	42.5	51.0	56.7	63.9	76.7	92.0	102.2	115.5	138.6	

감속기 부착 시 최대허용토크

Motor Model	Gearbox Model	회전 속도 r/min	전압 V	주파수 Hz	감속비	36	40	50	60	75	90	100	120	150	180	200	
9SBDG* 90F2H	9HBK□BH	1200	110	60	kgfcm N.m	173.4 17.00	192.7 18.89	240.9 23.61	289.1 28.33	300.0 29.40	300.0 29.40	300.0 29.40	300.0 29.40	300.0 29.40	300.0 29.40	300.0 29.40	
			220	60	kgfcm N.m	173.4 17.00	192.7 18.89	240.9 23.61	289.1 28.33	300.0 29.40	300.0 29.40	300.0 29.40	300.0 29.40	300.0 29.40	300.0 29.40	300.0 29.40	300.0 29.40
			220/ 240	50	kgfcm N.m	166.3 16.30	184.8 18.11	231.0 22.64	277.2 27.17	300.0 29.40	300.0 29.40	300.0 29.40	300.0 29.40	300.0 29.40	300.0 29.40	300.0 29.40	300.0 29.40
	9HFK□BH	90	110	60	kgfcm N.m	71.3 6.99	79.2 7.76	99.0 9.70	118.8 11.64	132.8 13.01	159.3 15.61	177.0 17.35	212.4 20.82	265.5 26.02	300.0 29.40	300.0 29.40	300.0 29.40
			220	60	kgfcm N.m	71.3 6.99	79.2 7.76	99.0 9.70	118.8 11.64	132.8 13.01	159.3 15.61	177.0 17.35	212.4 20.82	265.5 26.02	300.0 29.40	300.0 29.40	300.0 29.40
			220/ 240	50	kgfcm N.m	66.5 6.52	73.9 7.24	92.4 9.06	110.9 10.87	123.9 12.14	148.7 14.57	165.2 16.19	198.2 19.43	247.8 24.28	297.4 29.14	300.0 29.40	300.0 29.40

Motor Model	Gearbox Model	회전속도 r/min	전압 V	주파수 Hz	감속비	10	12	15	18	25	30	36	50	60
9SBDG* 90F2W	9WD□BL/□BR/□BRL	1200	110	60	kgfcm N.m	59.9 5.87	70.1 6.87	84.3 8.26	97.2 9.53	127.8 12.52	144.5 14.16	153.1 15.00	142.9 14.00	122.4 12.00
			220	60	kgfcm N.m	59.9 5.87	70.1 6.87	84.3 8.26	97.2 9.53	127.8 12.52	144.5 14.16	153.1 15.00	142.9 14.00	122.4 12.00
			220/240	50	kgfcm N.m	61.5 6.03	72.0 7.06	86.6 8.49	99.9 9.79	131.3 12.86	148.5 14.55	153.1 15.00	142.9 14.00	122.4 12.00
		90	110	60	kgfcm N.m	24.6 2.41	28.8 2.82	34.7 3.40	40.0 3.92	52.5 5.15	59.4 5.82	69.1 6.77	90.0 8.82	99.0 9.70
			220	60	kgfcm N.m	24.6 2.41	28.8 2.82	34.7 3.40	40.0 3.92	52.5 5.15	59.4 5.82	69.1 6.77	90.0 8.82	99.0 9.70
			220/240	50	kgfcm N.m	27.1 2.65	31.7 3.10	38.1 3.74	44.0 4.31	57.8 5.66	65.3 6.40	76.0 7.45	99.0 9.70	108.9 10.67

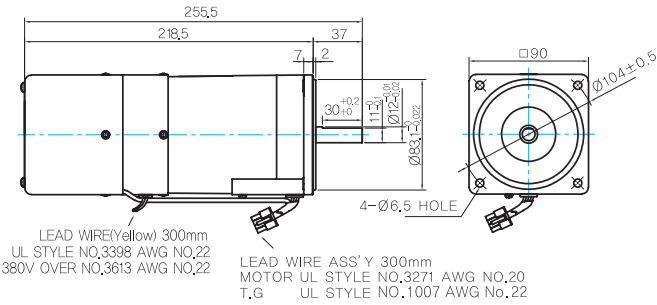
Motor Model	Gearbox Model	회전 속도 r/min	전압 V	주파수 Hz	감속비	7.5	10	15	20	25	30	40	50	60	80
9SBG* 90F2WH	9WH□-030	1200	110	60	kgfcm N.m	36.8 3.61	47.3 4.64	66.6 6.52	84.1 8.24	96.4 9.44	112.1 10.99	137.8 13.51	157.7 15.45	163.3 16.00	132.7 13.00
			220	60	kgfcm N.m	36.8 3.61	47.3 4.64	66.6 6.52	84.1 8.24	96.4 9.44	112.1 10.99	137.8 13.51	157.7 15.45	163.3 16.00	132.7 13.00
			220/240	50	kgfcm N.m	37.8 3.70	48.6 4.76	68.4 6.70	86.4 8.47	99.0 9.70	115.2 11.29	141.6 13.88	162.0 15.88	163.3 16.00	132.7 13.00
		90	110	60	kgfcm N.m	15.1 1.48	19.4 1.91	27.4 2.68	34.6 3.39	39.6 3.88	46.1 4.52	56.6 5.55	64.8 6.35	72.0 7.06	84.5 8.28
			220	60	kgfcm N.m	15.1 1.48	19.4 1.91	27.4 2.68	34.6 3.39	39.6 3.88	46.1 4.52	56.6 5.55	64.8 6.35	72.0 7.06	84.5 8.28
			220/240	50	kgfcm N.m	16.6 1.63	21.4 2.10	30.1 2.95	38.0 3.73	43.6 4.27	50.7 4.97	62.3 6.11	71.3 6.99	79.2 7.76	92.9 9.11

- 1) 모터 모델명 * 자리에는 전압코드가 들어갑니다.
- 2) 감속기 모델명 □ 안에는 감속비가 들어갑니다.
- 3) 위의 표에서 색칠된 범위의 감속비를 선택했을 때 감속기의 출력축은 모터의 출력축과 같은 방향으로 회전합니다.
흰색 바탕 범위의 감속비에서는 감속기 출력축은 모터 출력축의 회전방향과 반대방향으로 회전합니다.
- 4) 회전속도(r/min)는 모터의 동기회전속도(50Hz:1500r/min, 60Hz:1800r/min)를 감속비로 나누어 계산합니다.
실제 회전속도는 부하의 크기에 따라 표시보다 2~20% 정도 느립니다.

Dimensions

MOTOR ONLY

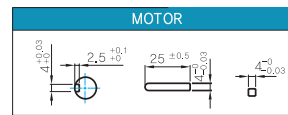
- MOTOR MODEL:
9SBDD□-90F2 (POWERFUL FAN)



MOTOR OUTPUT SHAFT

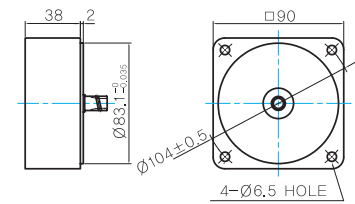
MODEL	SPEC
D-CUT TYPE	
9SBDD□-90F2	
KEY TYPE	
9SBDK□-90F2	

KEY SPEC



중간감속기

- MODEL: 9XD10□□



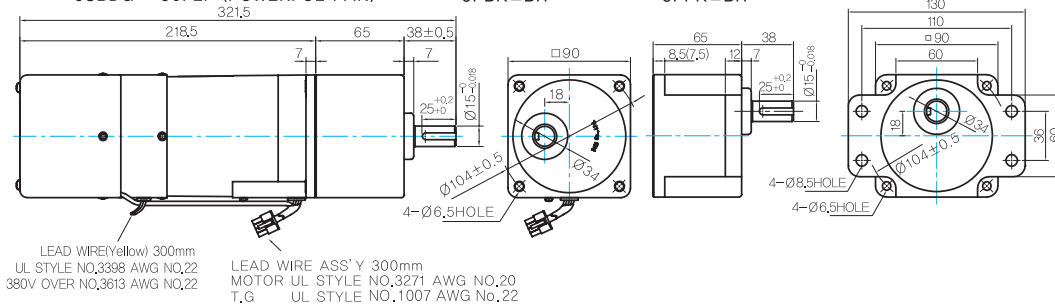
GEARED MOTOR

P TYPE GEARBOX

- MOTOR MODEL:
9SBDG□-90F2P (POWERFUL FAN)

- GEARBOX MODEL:
9PBK□BH

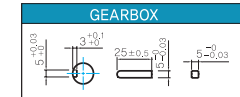
- GEARBOX MODEL:
9PFK□BH



GEARBOX OUTPUT SHAFT

MODEL	SPEC
KEY TYPE	
9PBK□BH 9PFK□BH	

KEY SPEC

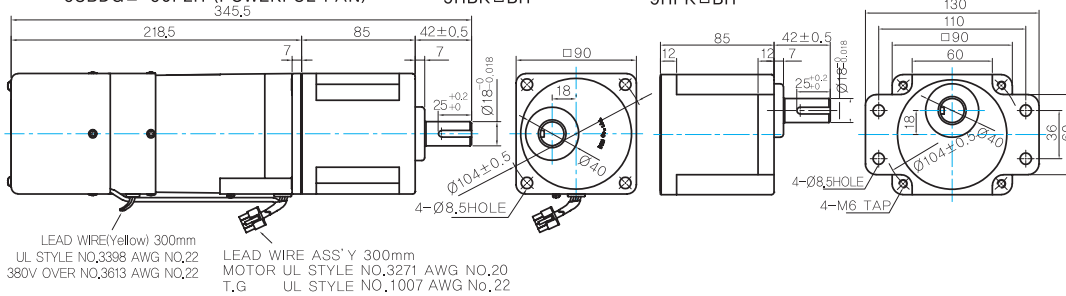


H TYPE GEARBOX

- MOTOR MODEL:
9SBDG□-90F2H (POWERFUL FAN)

- GEARBOX MODEL:
9HBK□BH

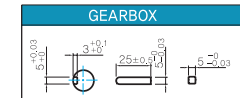
- GEARBOX MODEL:
9HFK□BH



GEARBOX OUTPUT SHAFT

MODEL	SPEC
KEY TYPE	
9HBK□BH 9HFK□BH	

KEY SPEC

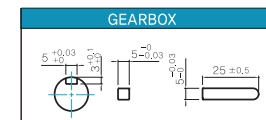
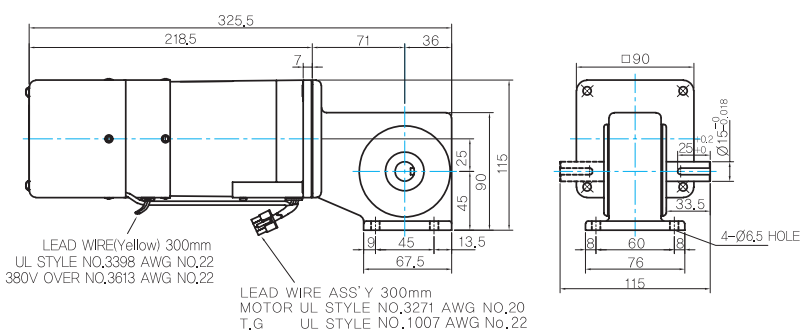


W TYPE GEARBOX

- MOTOR MODEL:
9SBDG□-90F2W (POWERFUL FAN)

- GEARBOX MODEL:
9WD□BL/BR/BRL

KEY SPEC



B AC Motors

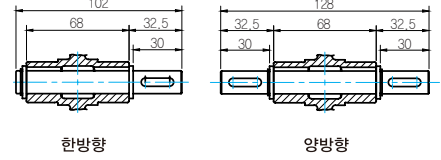
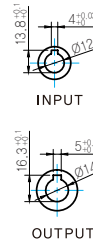
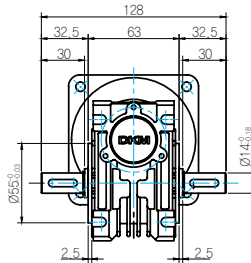
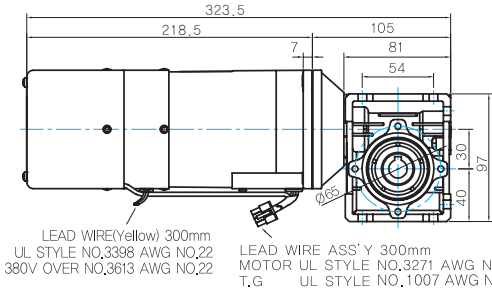
S.C. Brake Motor 90W (□90mm)

WH TYPE GEARBOX

● MOTOR MODEL:
9SBDG□-90F2WH (POWERFUL FAN)

● GEARBOX MODEL:
9WHD□-030

● SHAFT

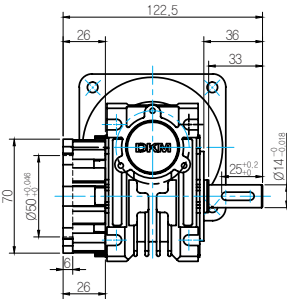
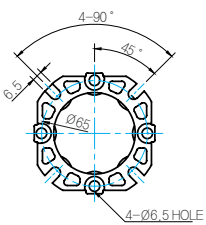


WEIGHT

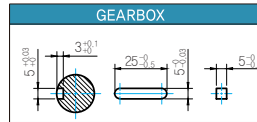
PART	WEIGHT(Kg)	
MOTOR	3.7	
GEAR BOX	9PB(F)K2BH - 9PB(F)K10BH	1.28
	9PB(F)K12.5BH - 9PB(F)K20BH	1.3
	9PB(F)K25BH - 9PB(F)K60BH	1.45
	9PB(F)K75BH - 9PB(F)K200BH	1.47
	9HB(F)K3BH - 9HB(F)K10BH	1.62
	9HB(F)K12.5BH - 9HB(F)K20BH	1.68
	9HB(F)K25BH - 9HB(F)K60BH	1.73
	9HB(F)K75BH - 9HB(F)K200BH	1.78
	9WD□BL/BR/BRL	1.0
	9WHD□-030	1.2
9XD10□□	0.6	

* 출력 FLANGE와 SHAFT는 별매입니다.

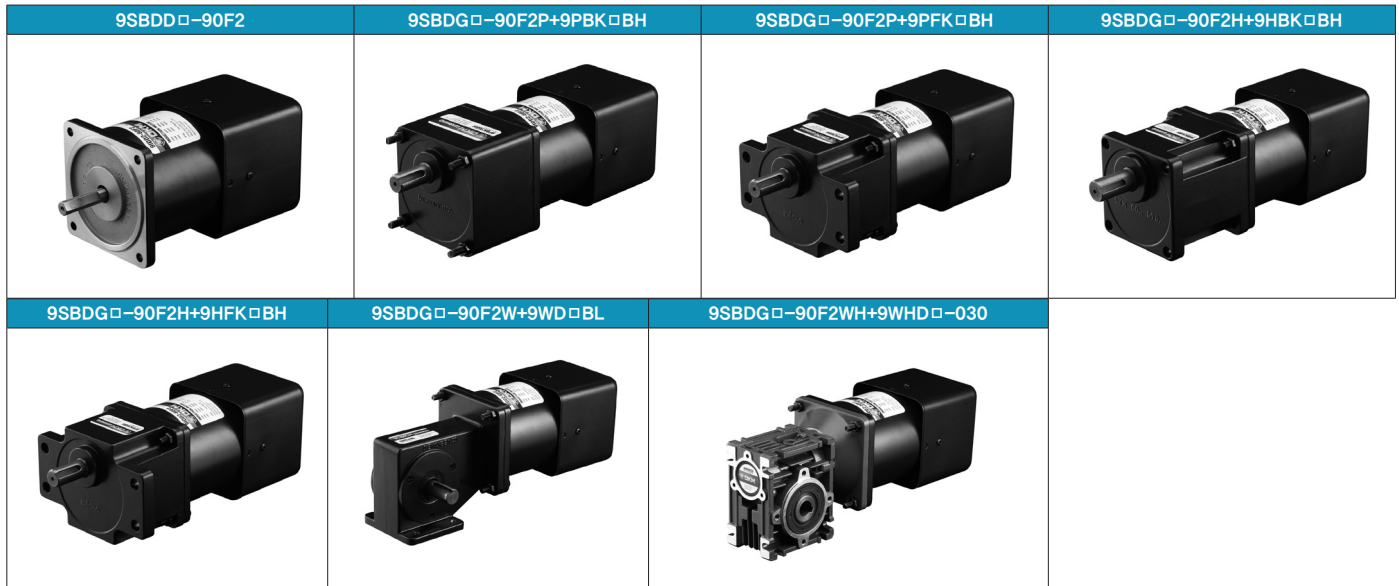
● FLANGE



● KEY SPEC



Motor Images



S.C. Brake Motor 120W (□90mm)

120W

Speed Control
Brake Motor
120W(□90mm)

Motor 사양

Model 9SBDG*-120F2□: Gear Type Shaft 9SBDG*-120F2□: D-Cut Type Shaft 9SBDK*-120F2□: Key Type Shaft	Output W	Voltage V	Frequency Hz	Poles	Duty	Speed Range r/min	Starting Torque		Permissible Torque				Capacitor μF / VAC	
							kgfcm	N.m	1200r/min		90r/min			
									kgfcm	N.m	kgfcm	N.m		
Lead Wire Type														
9SBDG1(A)-120F2□	120	1φ110	60	4	30min.	90-1700	7.80	0.780	8.20	0.820	3.60	0.360	30.0 / 250	
9SBDG2(D)-120F2□	120	1φ220	60	4	30min.	90-1700	7.60	0.760	8.00	0.800	3.30	0.330	7.0 / 450	
9SBDGE-120F2□	120	1φ220	50	4	30min.	90-1400	6.00	0.600	7.50	0.750	3.30	0.330	7.0 / 450	
		1φ240					6.50	0.650	8.00	0.800	3.80	0.380		

- 1) 모터 모델명 * 자리에는 전압코드가, □ 안에는 부착되는 감속기의 모델 타입명이 들어갑니다.
- 2) 전압코드 A, D, E는 TP(Thermal Protector) 부착 사양입니다.
- 3) Gear Type Shaft는 감속기 부착용이며 D-Cut 및 Key Type Shaft는 모터 단독 사용시의 출력축입니다.

감속기 부착 시 최대허용토크

Motor Model	Gearbox Model	회전속도 r/min	전압 V	주파수 Hz	감속비	2	3	3.6	5	6	7.5	9	10	12.5	15	18	20
9SBDG*-120F2P	9PBK□BH	1200	110	60	kgfcm	13.3	19.9	23.9	33.2	39.9	49.8	59.8	66.4	74.8	89.8	107.7	119.7
					N.m	1.30	1.95	2.34	3.25	3.91	4.88	5.86	6.51	7.33	8.80	10.56	11.73
					kgfcm	13.0	19.4	23.3	32.4	38.9	48.6	58.3	64.8	73.0	87.6	105.1	116.8
	9PFK□BH	90	110	60	kgfcm	5.8	8.7	10.5	14.6	17.5	21.9	26.2	29.2	32.9	39.4	47.3	52.6
					N.m	0.57	0.86	1.03	1.43	1.71	2.14	2.57	2.86	3.22	3.86	4.64	5.15
					kgfcm	5.3	8.0	9.6	13.4	16.0	20.0	24.1	26.7	30.1	36.1	43.4	48.2
		220/240	50	kgfcm	5.3	8.0	9.6	13.4	16.0	20.0	24.1	26.7	30.1	36.1	43.4	48.2	
				N.m	0.52	0.79	0.94	1.31	1.57	1.96	2.36	2.62	2.95	3.54	4.25	4.72	
				kgfcm	5.3	8.0	9.6	13.4	16.0	20.0	24.1	26.7	30.1	36.1	43.4	48.2	
N.m	0.52	0.79	0.94	1.31	1.57	1.96	2.36	2.62	2.95	3.54	4.25	4.72					

Motor Model	Gearbox Model	회전속도 r/min	전압 V	주파수 Hz	감속비	25	30	36	40	50	60	75	90	100	120	150	180	200			
9SBDG*-120F2P	9PBK□BH	1200	110	60	kgfcm	135.3	162.4	194.8	200.0	200.0	200.0	200.0	200.0	200.0	200.0	200.0	200.0	200.0	200.0		
					N.m	13.26	15.91	19.09	19.60	19.60	19.60	19.60	19.60	19.60	19.60	19.60	19.60	19.60	19.60	19.60	19.60
					kgfcm	132.0	158.4	190.1	200.0	200.0	200.0	200.0	200.0	200.0	200.0	200.0	200.0	200.0	200.0	200.0	200.0
	9PFK□BH	90	110	60	kgfcm	59.4	71.3	85.5	95.0	118.8	142.6	159.3	191.2	200.0	200.0	200.0	200.0	200.0	200.0	200.0	
					N.m	5.82	6.99	8.38	9.31	11.64	13.97	15.61	18.73	19.60	19.60	19.60	19.60	19.60	19.60	19.60	19.60
					kgfcm	54.5	65.3	78.4	87.1	108.9	130.7	146.0	175.2	194.7	200.0	200.0	200.0	200.0	200.0	200.0	200.0
		220/240	50	kgfcm	54.5	65.3	78.4	87.1	108.9	130.7	146.0	175.2	194.7	200.0	200.0	200.0	200.0	200.0	200.0		
				N.m	5.34	6.40	7.68	8.54	10.67	12.81	14.31	17.17	19.08	19.60	19.60	19.60	19.60	19.60	19.60		
				kgfcm	5.34	6.40	7.68	8.54	10.67	12.81	14.31	17.17	19.08	19.60	19.60	19.60	19.60	19.60	19.60		
N.m	0.534	0.640	0.768	0.854	1.067	1.281	1.431	1.717	1.908	19.60	19.60	19.60	19.60	19.60	19.60						

Motor Model	Gearbox Model	회전속도 r/min	전압 V	주파수 Hz	감속비	3	3.6	5	6	7.5	9	10	12.5	15	18	20	25	30
9SBDG*-120F2H	9HBK□BH	1200	110	60	kgfcm	19.9	23.9	33.2	39.9	49.8	59.8	66.4	74.8	89.8	107.7	119.7	135.3	162.4
					N.m	1.95	2.34	3.25	3.91	4.88	5.86	6.51	7.33	8.80	10.56	11.73	13.26	15.91
					kgfcm	19.4	23.3	32.4	38.9	48.6	58.3	64.8	73.0	87.6	105.1	116.8	132.0	158.4
	9HFK□BH	90	110	60	kgfcm	8.7	10.5	14.6	17.5	21.9	26.2	29.2	32.9	39.4	47.3	52.6	59.4	71.3
					N.m	0.86	1.03	1.43	1.71	2.14	2.57	2.86	3.22	3.86	4.64	5.15	5.82	6.99
					kgfcm	8.0	9.6	13.4	16.0	20.0	24.1	26.7	30.1	36.1	43.4	48.2	54.5	65.3
		220/240	50	kgfcm	8.0	9.6	13.4	16.0	20.0	24.1	26.7	30.1	36.1	43.4	48.2	54.5	65.3	
				N.m	0.79	0.94	1.31	1.57	1.96	2.36	2.62	2.95	3.54	4.25	4.72	5.34	6.40	
				kgfcm	8.0	9.6	13.4	16.0	20.0	24.1	26.7	30.1	36.1	43.4	48.2	54.5	65.3	
N.m	0.79	0.94	1.31	1.57	1.96	2.36	2.62	2.95	3.54	4.25	4.72	5.34	6.40					

감속기 부착 시 최대허용토크

Motor Model	Gearbox Model	회전 속도 r/min	전압 V	주파수 Hz	감속비	36	40	50	60	75	90	100	120	150	180	200	
9SBDG* -120F2H	9HBK□BH	1200	110	60	kgfcm N.m	194.8 19.09	216.5 21.22	270.6 26.52	300.0 29.40	300.0 29.40	300.0 29.40	300.0 29.40	300.0 29.40	300.0 29.40	300.0 29.40	300.0 29.40	
			220	60	kgfcm N.m	190.1 18.63	211.2 20.70	264.0 25.87	300.0 29.40	300.0 29.40	300.0 29.40	300.0 29.40	300.0 29.40	300.0 29.40	300.0 29.40	300.0 29.40	300.0 29.40
		220/240	50	kgfcm N.m	178.2 17.46	198.0 19.40	247.5 24.26	297.0 29.11	300.0 29.40	300.0 29.40	300.0 29.40	300.0 29.40	300.0 29.40	300.0 29.40	300.0 29.40	300.0 29.40	300.0 29.40
	9HFK□BH	90	110	60	kgfcm N.m	85.5 8.38	95.0 9.31	118.8 11.64	142.6 13.97	159.3 15.61	191.2 18.73	212.4 20.82	254.9 24.98	300.0 29.40	300.0 29.40	300.0 29.40	300.0 29.40
			220	60	kgfcm N.m	78.4 7.68	87.1 8.54	108.9 10.67	130.7 12.81	146.0 14.31	175.2 17.17	194.7 19.08	233.6 22.90	292.1 28.62	300.0 29.40	300.0 29.40	300.0 29.40
		220/240	50	kgfcm N.m	78.4 7.68	87.1 8.54	108.9 10.67	130.7 12.81	146.0 14.31	175.2 17.17	194.7 19.08	233.6 22.90	292.1 28.62	300.0 29.40	300.0 29.40	300.0 29.40	300.0 29.40

Motor Model	Gearbox Model	회전속도 r/min	전압 V	주파수 Hz	감속비	10	12	15	18	25	30	36	50	60
9SBDG* -120F2W	9WD□BL/□BR/□BRL	1200	110	60	kgfcm N.m	67.2 6.59	78.7 7.71	94.7 9.28	109.2 10.70	143.5 14.06	162.4 15.91	153.1 15.00	142.9 14.00	122.4 12.00
			220	60	kgfcm N.m	65.6 6.43	76.8 7.53	92.4 9.06	106.6 10.44	140.0 13.72	158.4 15.52	153.1 15.00	142.9 14.00	122.4 12.00
			220/240	50	kgfcm N.m	61.5 6.03	72.0 7.06	86.6 8.49	99.9 9.79	131.3 12.86	148.5 14.55	153.1 15.00	142.9 14.00	122.4 12.00
		90	110	60	kgfcm N.m	29.5 2.89	34.6 3.39	41.6 4.07	48.0 4.70	63.0 6.17	71.3 6.99	82.9 8.13	108.0 10.58	122.4 12.00
			220	60	kgfcm N.m	27.1 2.65	31.7 3.10	38.1 3.74	44.0 4.31	57.8 5.66	65.3 6.40	76.0 7.45	99.0 9.70	122.4 12.00
			220/240	50	kgfcm N.m	27.1 2.65	31.7 3.10	38.1 3.74	44.0 4.31	57.8 5.66	65.3 6.40	76.0 7.45	99.0 9.70	122.4 12.00

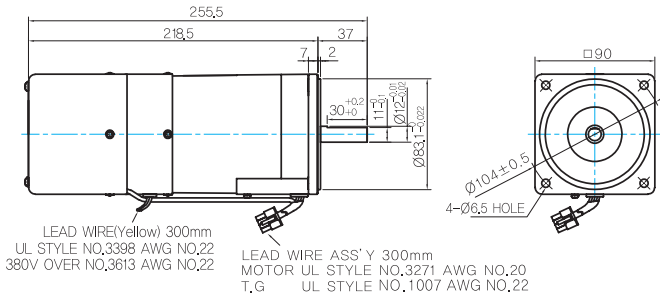
Motor Model	Gearbox Model	회전속도 r/min	전압 V	주파수 Hz	감속비	7.5	10	15	20	25	30	40	50	60	80
9SBDG* -120F2WH	9WHD□-030	1200	110	60	kgfcm N.m	41.3 4.05	53.1 5.21	74.8 7.33	94.5 9.26	108.2 10.61	126.0 12.34	154.8 15.17	173.5 17.00	163.3 16.00	132.7 13.00
			220	60	kgfcm N.m	40.3 3.95	51.8 5.08	73.0 7.15	92.2 9.03	105.6 10.35	122.9 12.04	151.0 14.80	173.5 17.00	163.3 16.00	132.7 13.00
			220/240	50	kgfcm N.m	40.3 3.95	51.8 5.08	73.0 7.15	92.2 9.03	105.6 10.35	122.9 12.04	151.0 14.80	173.5 17.00	163.3 16.00	132.7 13.00
		90	110	60	kgfcm N.m	18.1 1.78	23.3 2.29	32.8 3.22	41.5 4.06	47.5 4.66	55.3 5.42	68.0 6.66	77.8 7.62	86.4 8.47	101.4 9.93
			220	60	kgfcm N.m	16.6 1.63	21.4 2.10	30.1 2.95	38.0 3.73	43.6 4.27	50.7 4.97	62.3 6.11	71.3 6.99	79.2 7.76	92.9 9.11
			220/240	50	kgfcm N.m	19.2 1.88	24.6 2.41	34.7 3.40	43.8 4.29	50.2 4.92	58.4 5.72	71.7 7.03	82.1 8.04	91.2 8.94	107.0 10.49

- 1) 모터 모델명 * 자리에는 전압코드가 들어갑니다.
- 2) 감속기 모델명 □ 안에는 감속비가 들어갑니다.
- 3) 위의 표에서 색칠된 범위의 감속비를 선택했을 때 감속기의 출력축은 모터의 출력축과 같은 방향으로 회전합니다.
흰색 바탕 범위의 감속비에서는 감속기 출력축은 모터 출력축의 회전방향과 반대방향으로 회전합니다.
- 4) 회전속도(r/min)는 모터의 동기회전속도(50Hz:1500r/min, 60Hz:1800r/min)를 감속비로 나누어 계산합니다.
실제 회전속도는 부하의 크기에 따라 표시보다 2~20% 정도 느립니다.

Dimensions

MOTOR ONLY

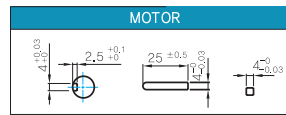
- MOTOR MODEL:
9SBDD□-120F2 (POWERFUL FAN)



MOTOR OUTPUT SHAFT

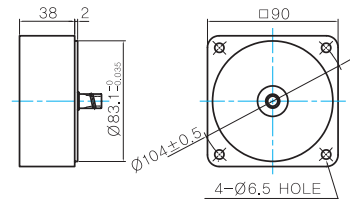
MODEL	SPEC
D-CUT TYPE	
9SBDD□-120F2	
KEY TYPE	
9SBDK□-120F2	

KEY SPEC



중간감속기

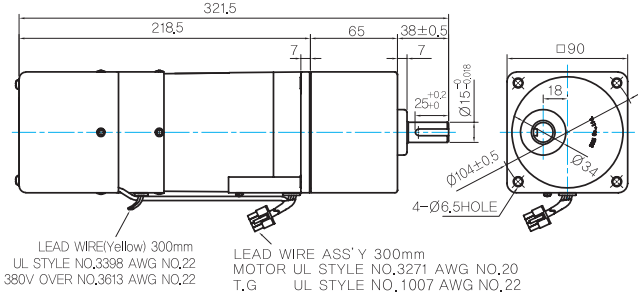
- MODEL: 9XD10□□



GEARED MOTOR

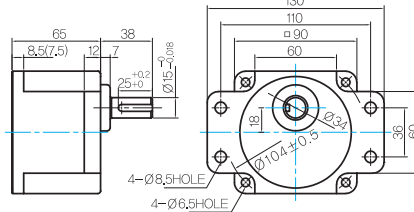
P TYPE GEARBOX

- MOTOR MODEL:
9SBDG□-120F2P (POWERFUL FAN)



- GEARBOX MODEL:
9PBK□BH

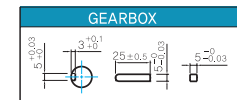
- GEARBOX MODEL:
9PFK□BH



GEARBOX OUTPUT SHAFT

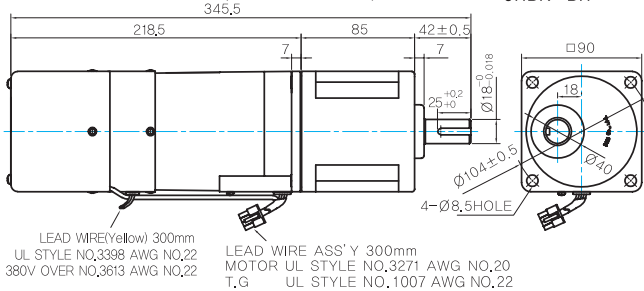
MODEL	SPEC
KEY TYPE	
9PBK□BH	
9PFK□BH	

KEY SPEC



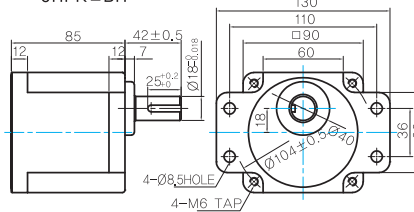
H TYPE GEARBOX

- MOTOR MODEL:
9SBDG□-120F2H (POWERFUL FAN)



- GEARBOX MODEL:
9HBK□BH

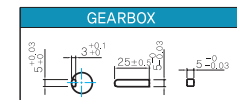
- GEARBOX MODEL:
9HFK□BH



GEARBOX OUTPUT SHAFT

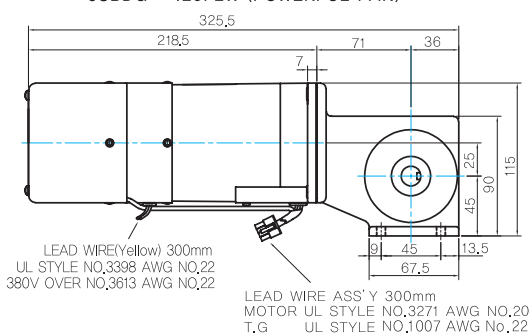
MODEL	SPEC
KEY TYPE	
9HBK□BH	
9HFK□BH	

KEY SPEC



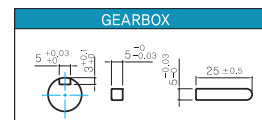
W TYPE GEARBOX

- MOTOR MODEL:
9SBDG□-120F2W (POWERFUL FAN)



- GEARBOX MODEL:
9WD□BL/BR/BRL

KEY SPEC

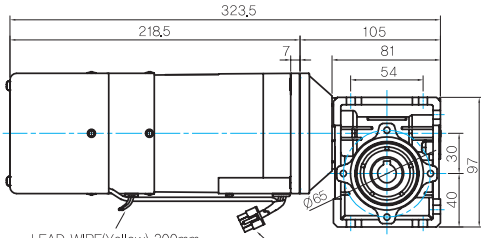


B AC Motors

S.C. Brake Motor 120W (□90mm)

WH TYPE GEARBOX

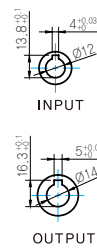
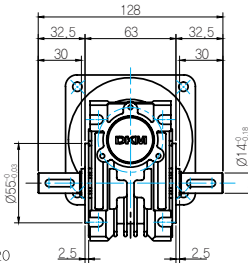
● MOTOR MODEL:
9SBDG□-120F2WH (POWERFUL FAN)



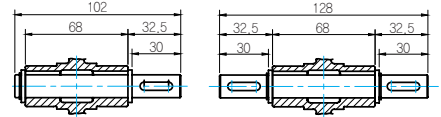
LEAD WIRE(Yellow) 300mm
UL STYLE NO.3398 AWG NO.22
380V OVER NO.3613 AWG NO.22

LEAD WIRE ASS'Y 300mm
MOTOR UL STYLE NO.3271 AWG NO.20
T,G UL STYLE NO.1007 AWG No.22

● GEARBOX MODEL:
9WHD□-030



● SHAFT



한방향

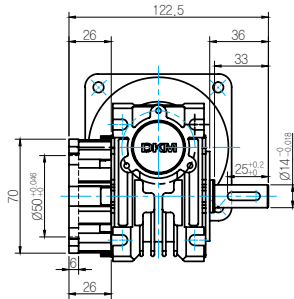
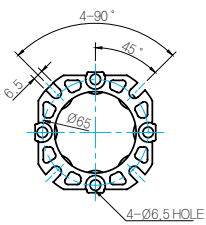
양방향

WEIGHT

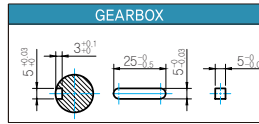
PART	WEIGHT(Kg)	
MOTOR	3.7	
GEAR BOX	9PB(F)K2BH - 9PB(F)K10BH	1.28
	9PB(F)K12.5BH - 9PB(F)K20BH	1.3
	9PB(F)K25BH - 9PB(F)K60BH	1.45
	9PB(F)K75BH - 9PB(F)K200BH	1.47
	9HB(F)K3BH - 9HB(F)K10BH	1.62
	9HB(F)K12.5BH - 9HB(F)K20BH	1.68
	9HB(F)K25BH - 9HB(F)K60BH	1.73
	9HB(F)K75BH - 9HB(F)K200BH	1.78
	9WD□BL/BR/BRL	1.0
	9WHD□-030	1.2
9XD10□	0.6	

* 출력 FLANGE와 SHAFT는 별매입니다.

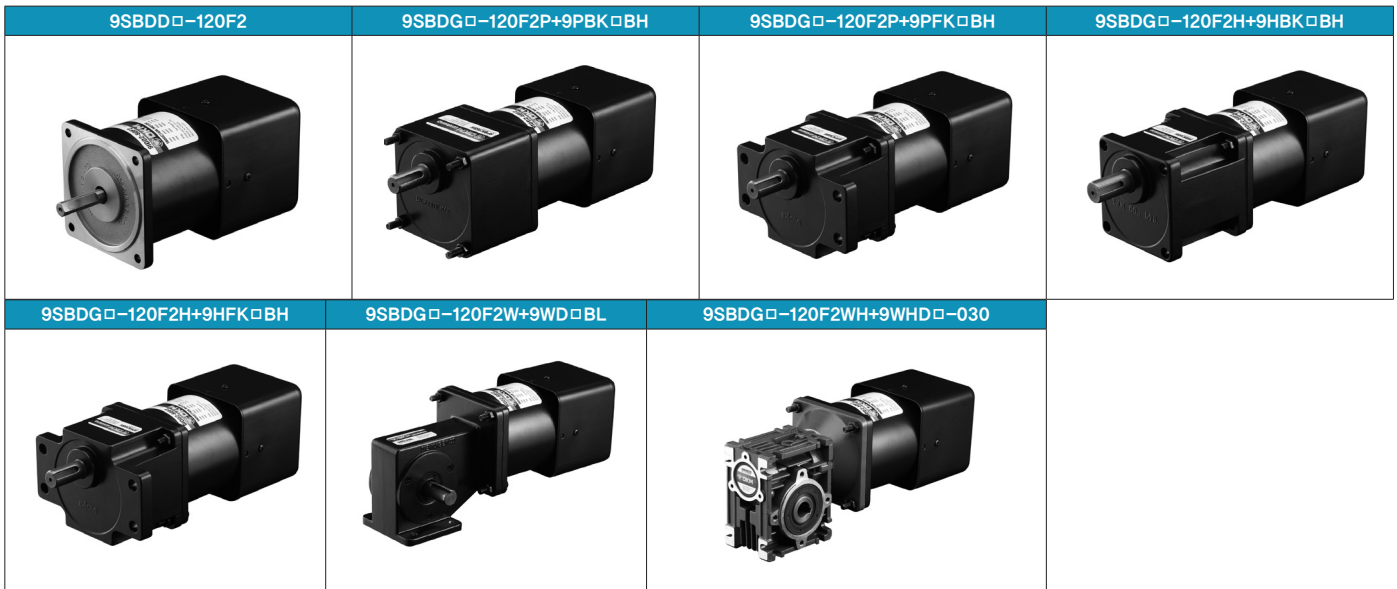
● FLANGE



● KEY SPEC



Motor Images



S.C. Brake Motor 180W (□90mm)

180W

Speed Control
Brake Motor
180W (□90mm)

Motor 사양

Model 9SBDG*-180F2□: Gear Type Shaft 9SBD*-180F2: D-Cut Type Shaft 9SBDK*-180F2: Key Type Shaft	Output W	Voltage V	Frequency Hz	Poles	Duty	Speed Range r/min	Starting Torque		Permissible Torque				Capacitor μF / VAC
							kgfcm	N.m	1200r/min		90r/min		
									kgfcm	N.m	kgfcm	N.m	
Lead Wire Type													
9SBDG1(A)-180F2□	180	1φ110	60	4	30min.	90-1700	6.40	0.640	10.00	1.000	3.00	0.300	30.0 / 250
9SBDG2(D)-180F2□	180	1φ220	60	4	30min.	90-1700	6.40	0.640	10.00	1.000	3.00	0.300	8.0 / 450
9SBDGE-180F2□	180	1φ220	50	4	30min.	90-1400	6.40	0.640	10.00	1.000	3.00	0.300	8.0 / 450
		1φ240					7.00	0.700	11.00	1.100	3.30	0.330	

- 1) 모터 모델명 * 자리에는 전압코드가, □ 안에는 부착되는 감속기의 모델 타입명이 들어갑니다.
- 2) 전압코드 A, D, E는 TP(Thermal Protector) 부착 사양입니다.
- 3) Gear Type Shaft는 감속기 부착용이며 D-Cut 및 Key Type Shaft는 모터 단독 사용시의 출력축 입니다.

감속기 부착 시 최대허용토크

Motor Model	Gearbox Model	회전속도 r/min	전압 V	주파수 Hz	감속비	3	3.6	5	6	7.5	9	10	12.5	15	18	20	25
9SBDG*-180F2H	9HBK□BH 9HFK□BH	1200	110	60	kgfcm	24.3	29.2	40.5	48.6	60.8	72.9	81.0	91.3	109.5	131.4	146.0	165.0
					N.m	2.38	2.86	3.97	4.76	5.95	7.14	7.94	8.94	10.73	12.88	14.31	16.17
					kgfcm	24.3	29.2	40.5	48.6	60.8	72.9	81.0	91.3	109.5	131.4	146.0	165.0
		N.m	2.38	2.86	3.97	4.76	5.95	7.14	7.94	8.94	10.73	12.88	14.31	16.17			
		90	110	60	kgfcm	7.3	8.7	12.2	14.6	18.2	21.9	24.3	27.4	32.9	39.4	43.8	49.5
					N.m	0.71	0.86	1.19	1.43	1.79	2.14	2.38	2.68	3.22	3.86	4.29	4.85
kgfcm	7.3				8.7	12.2	14.6	18.2	21.9	24.3	27.4	32.9	39.4	43.8	49.5		
N.m	0.71	0.86	1.19	1.43	1.79	2.14	2.38	2.68	3.22	3.86	4.29	4.85					

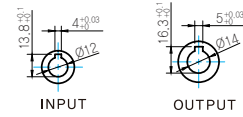
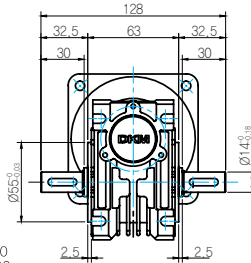
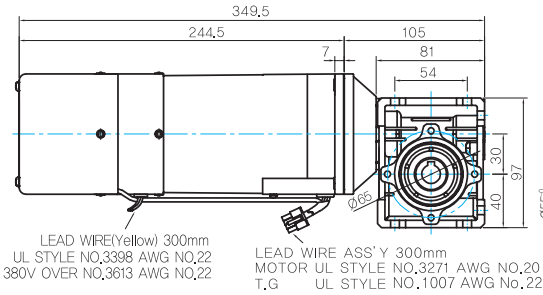
Motor Model	Gearbox Model	회전속도 r/min	전압 V	주파수 Hz	감속비	30	36	40	50	60	75	90	100	120	150	180	200
9SBDG*-180F2H	9HBK□BH 9HFK□BH	1200	110	60	kgfcm	198.0	237.6	264.0	300.0	300.0	300.0	300.0	300.0	300.0	300.0	300.0	300.0
					N.m	19.40	23.28	25.87	29.40	29.40	29.40	29.40	29.40	29.40	29.40	29.40	29.40
					kgfcm	198.0	237.6	264.0	300.0	300.0	300.0	300.0	300.0	300.0	300.0	300.0	300.0
		N.m	19.40	23.28	25.87	29.40	29.40	29.40	29.40	29.40	29.40	29.40	29.40	29.40			
		90	110	60	kgfcm	59.4	71.3	79.2	99.0	118.8	132.8	159.3	177.0	212.4	265.5	300.0	
					N.m	5.82	6.99	7.76	9.70	11.64	13.01	15.61	17.35	20.82	26.02	29.40	
kgfcm	59.4				71.3	79.2	99.0	118.8	132.8	159.3	177.0	212.4	265.5	300.0			
N.m	5.82	6.99	7.76	9.70	11.64	13.01	15.61	17.35	20.82	26.02	29.40						

- 1) 모터 모델명 □ 안에는 전압코드가 들어갑니다.
- 2) 감속기 모델명 □ 안에는 감속비가 들어갑니다.
- 3) 위의 표에서 색칠된 범위의 감속비를 선택했을 때 감속기의 출력축은 모터의 출력축과 같은 방향으로 회전합니다. 흰색 바탕 범위의 감속비에서는 감속기 출력축은 모터 출력축의 회전방향과 반대방향으로 회전합니다.
- 4) 회전속도(r/min)는 모터의 동기회전속도(50Hz:1500r/min, 60Hz:1800r/min)를 감속비로 나누어 계산합니다. 실제 회전속도는 부하의 크기에 따라 표시보다 2~20% 정도 느립니다.

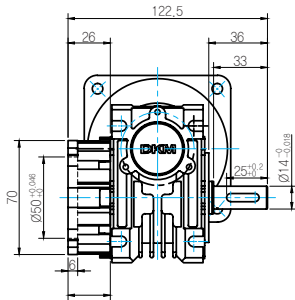
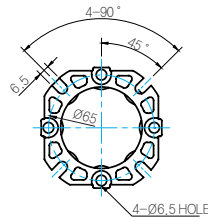
WH TYPE GEARBOX

● MOTOR MODEL:
9SBDG□-180F2WH (POWERFUL FAN)

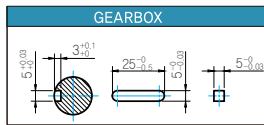
● GEARBOX MODEL:
9WHD□-030



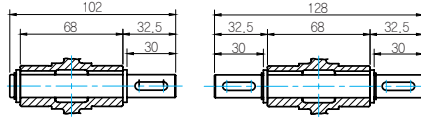
● FLANGE



● KEY SPEC



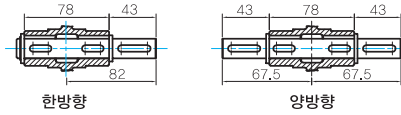
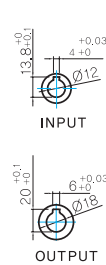
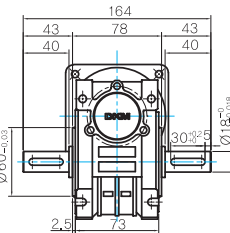
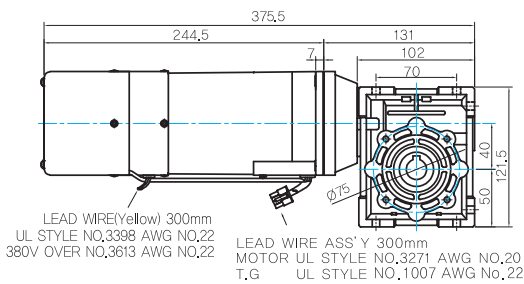
● SHAFT



● MOTOR MODEL:
9WHD□-180F2WH (POWERFUL FAN)

● GEARBOX MODEL:
9WHD□-040

● SHAFT

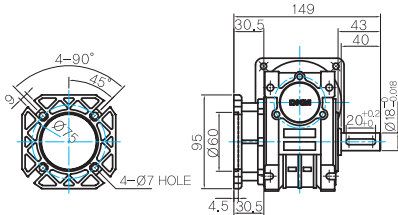


WEIGHT

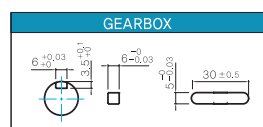
PART		WEIGHT(Kg)
MOTOR		4.50
GEAR BOX	9HB(F)K3BH - 9HB(F)K10BH	1.62
	9HB(F)K12.5BH - 9HB(F)K20BH	1.68
	9HB(F)K25BH - 9HB(F)K60BH	1.73
	9HB(F)K75BH - 9HB(F)K200BH	1.78
	9WHD□-030	1.2
	9WHD□-040	2.1
	9XD10□	0.6

* 출력 FLANGE와 SHAFT는 별매입니다.

● FLANGE



● KEY SPEC



B AC Motors

S.C. Brake Motor 180W (□ 90mm)

Motor Images

9SBDD□-180F2	9SBDG□-180F2H+9HBK□BH	9SBDG□-180F2H+9HFK□BH	9SBDG□-180F2WH+9WHD□-030
